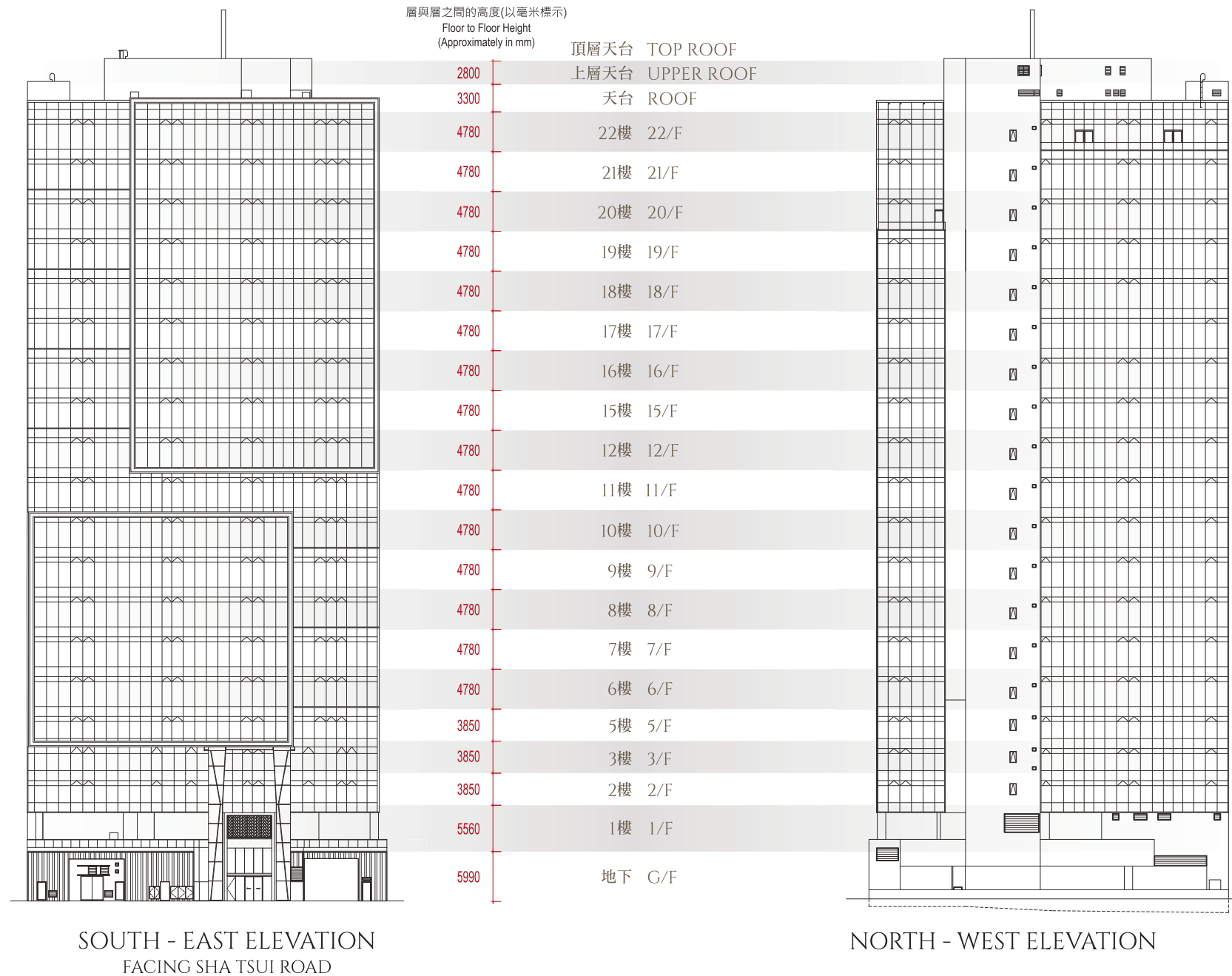


# ELEVATION



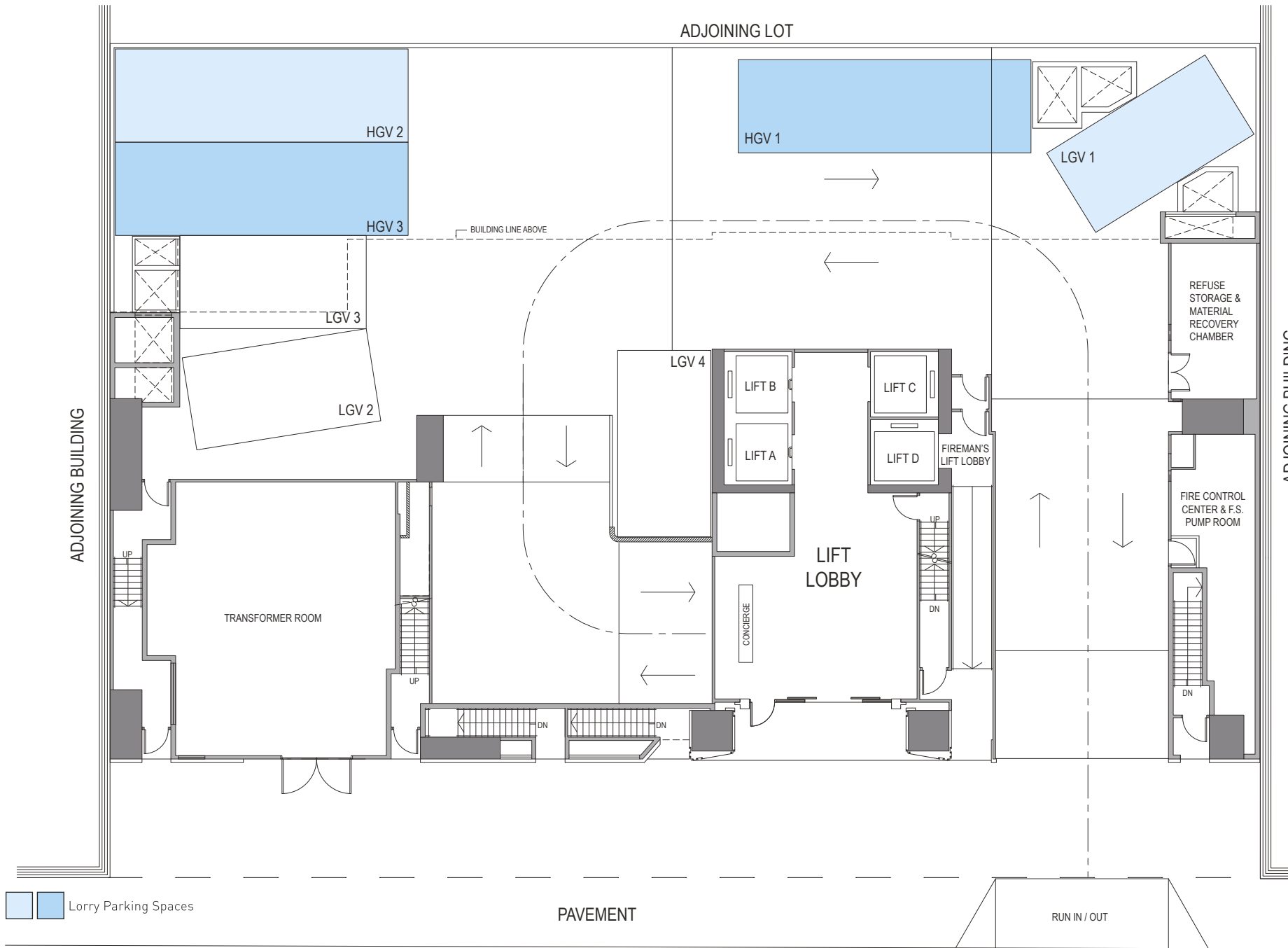
**備註 Notes**

不設4樓、13樓及14樓 Omitted 4/F, 13/F and 14/F

賣方保留權利不時改動發展項目的建築圖則及其他圖則。發展項目的設計以政府相關部門最後批准的圖則為準。The vendor reserves the right to make alterations to the building plans and other plans relating to the Development from time to time, and the design of the Development shall be subject to the final plans approved by the relevant Government authorities. 因較高樓層的結構牆的厚度遞減，較高樓層的單位的內部面積，一般比較低樓層的單位的內部面積稍大。The internal areas of units on upper floors will generally be slightly larger than lower floors due to the reducing thickness of structural walls on upper levels. 樓面平面圖之尺規所列數字為以毫米標示之建築結構尺寸。The dimensions in the floor plans are all structural dimensions in millimetre.

# GROUND FLOOR

SCALE 0m 9m



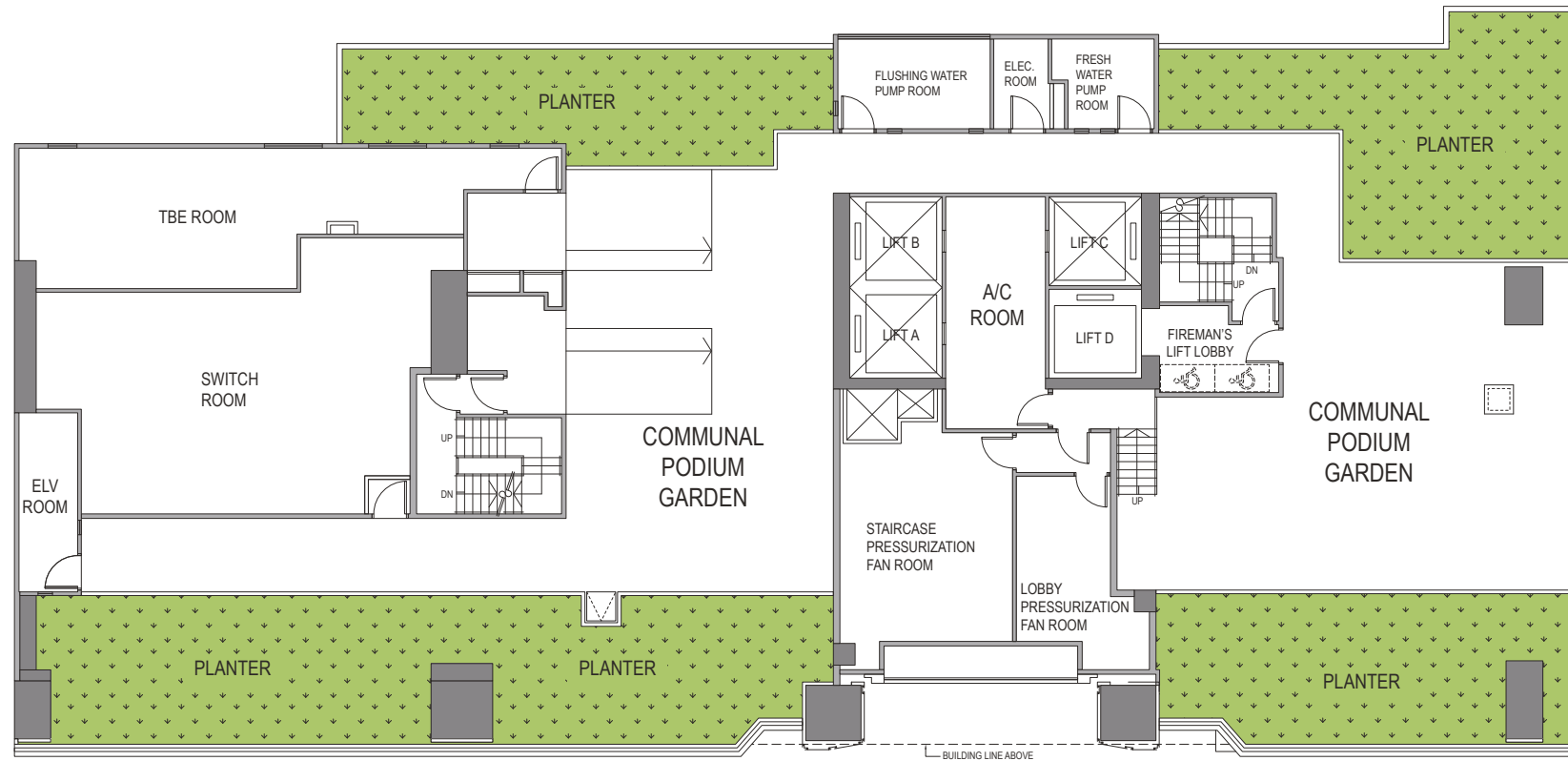
**備註 Notes**

不設4樓、13樓及14樓 Omitted 4/F, 13/F and 14/F

賣方保留權利不時改動發展項目的建築圖則及其他圖則，發展項目的設計以政府相關部門最後批准的圖則為準。The vendor reserves the right to make alterations to the building plans and other plans relating to the Development from time to time, and the design of the Development shall be subject to the final plans approved by the relevant Government authorities. 因較高樓層的結構牆的厚度遞減，較高樓層的單位的內部面積，一般比較低樓層的單位的內部面積稍大。The internal areas of units on upper floors will generally be slightly larger than lower floors due to the reducing thickness of structural walls on upper levels. 樓面平面圖之尺規所列數字為以毫米標示之建築結構尺寸。The dimensions in the floor plans are all structural dimensions in millimetre.

# 1<sup>ST</sup> FLOOR

SCALE 0m  9m



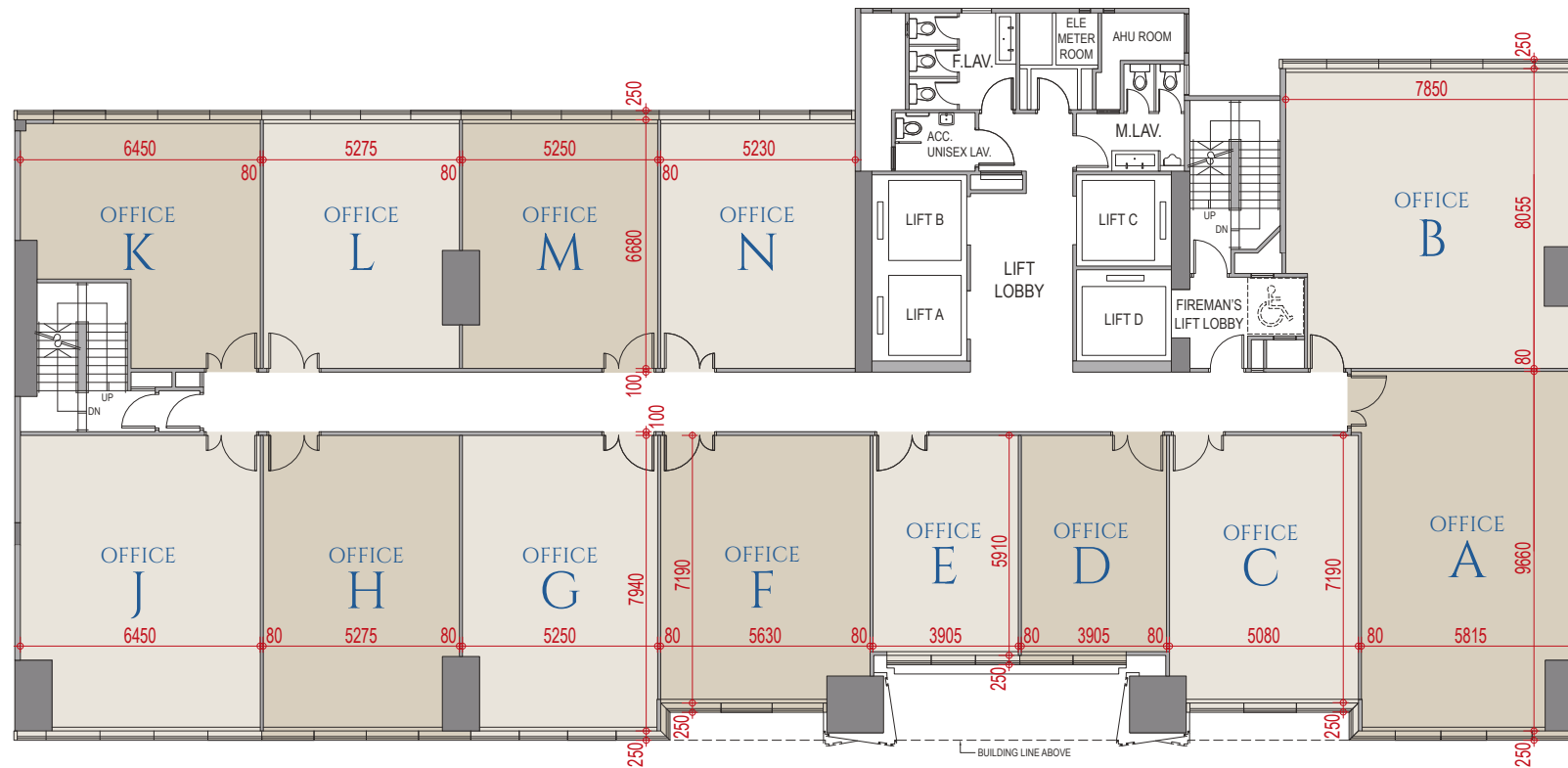
備註 Notes

不設4樓、13樓及14樓 Omitted 4/F, 13/F and 14/F

賣方保留權利不時改動發展項目的建築圖則及其他圖則。發展項目的設計以政府相關部門最後批准的圖則為準。The vendor reserves the right to make alterations to the building plans and other plans relating to the Development from time to time, and the design of the Development shall be subject to the final plans approved by the relevant Government authorities. 因較高樓層的結構牆的厚度遞減，較高樓層的單位的內部面積，一般比較低樓層的單位的內部面積稍大。The internal areas of units on upper floors will generally be slightly larger than lower floors due to the reducing thickness of structural walls on upper levels. 樓面平面圖之尺規所列數字為以毫米標示之建築結構尺寸。The dimensions in the floor plans are all structural dimensions in millimetre.

# 2<sup>ND</sup> - 3<sup>RD</sup> FLOOR

SCALE 0m 9m



## AREA SCHEDULE

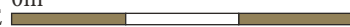
OFFICE	A	B	C	D	E	F	G	H	J	K	L	M	N
AREA (sq.ft.)													
Gross Area	1,000	1,097	672	406	410	730	733	735	910	650	621	618	656
Saleable Area	652	715	438	265	267	476	478	479	593	424	405	403	428

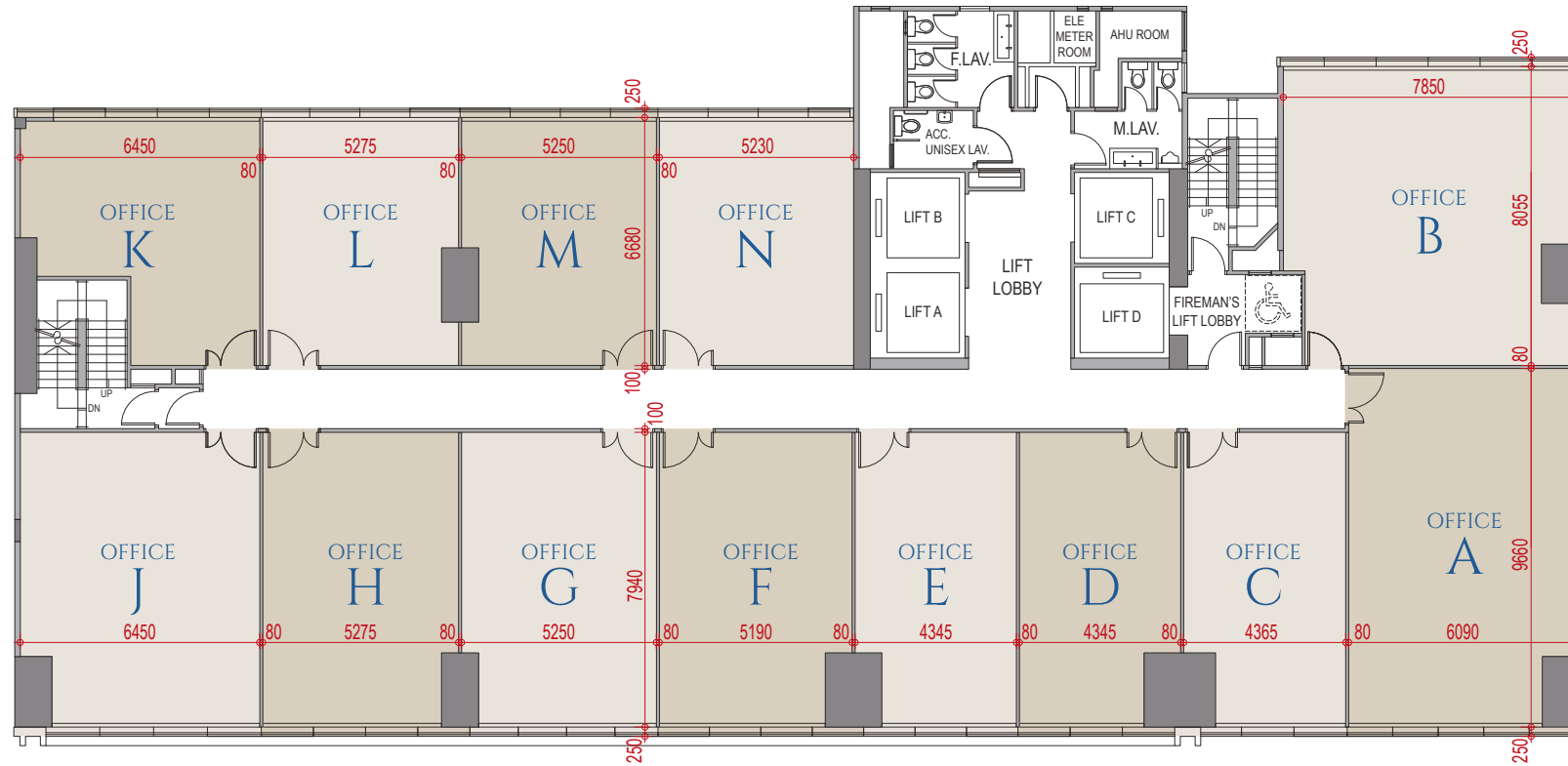
**備註 Notes**

不設4樓、13樓及14樓 Omitted 4/F, 13/F and 14/F

賣方保留權利不時改動發展項目的建築圖則及其他圖則，發展項目的設計以政府相關部門最後批准的圖則為準。The vendor reserves the right to make alterations to the building plans and other plans relating to the Development from time to time, and the design of the Development shall be subject to the final plans approved by the relevant Government authorities. 因較高樓層的結構牆的厚度遞減，較高樓層的單位的內部面積，一般比較低樓層的單位的內部面積稍大。The internal areas of units on upper floors will generally be slightly larger than lower floors due to the reducing thickness of structural walls on upper levels. 樓面平面圖之尺規所列數字為以毫米標示之建築結構尺寸。The dimensions in the floor plans are all structural dimensions in millimetre.

# 5<sup>TH</sup> FLOOR

SCALE 0m  9m



## AREA SCHEDULE

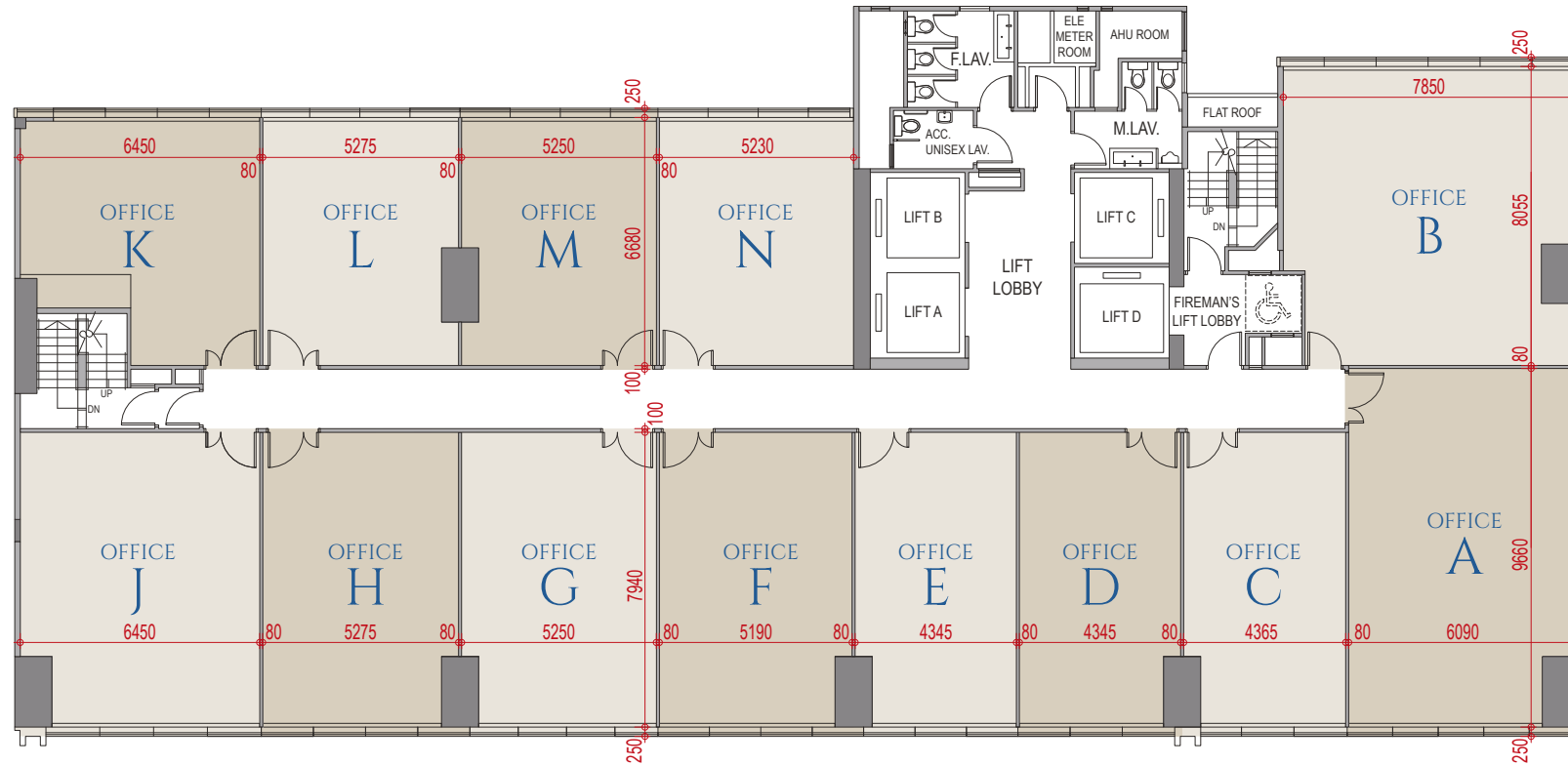
AREA (sq.ft.)	OFFICE A	OFFICE B	OFFICE C	OFFICE D	OFFICE E	OFFICE F	OFFICE G	OFFICE H	OFFICE J	OFFICE K	OFFICE L	OFFICE M	OFFICE N
Gross Area	1,034	1,097	626	589	604	722	729	735	910	650	621	618	656
Saleable Area	674	715	408	384	394	471	475	479	593	424	405	403	428

**備註 Notes**

不設4樓、13樓及14樓 Omitted 4/F, 13/F and 14/F

賣方保留權利不時改動發展項目的建築圖則及其他圖則，發展項目的設計以政府相關部門最後批准的圖則為準。The vendor reserves the right to make alterations to the building plans and other plans relating to the Development from time to time, and the design of the Development shall be subject to the final plans approved by the relevant Government authorities. 因較高樓層的結構牆的厚度遞減，較高樓層的單位的內部面積，一般比較低樓層的單位的內部面積稍大。The internal areas of units on upper floors will generally be slightly larger than lower floors due to the reducing thickness of structural walls on upper levels. 樓面平面圖之尺規所列數字為以毫米標示之建築結構尺寸。The dimensions in the floor plans are all structural dimensions in millimetre.

SCALE 0m 9m



## AREA SCHEDULE

OFFICE	A	B	C	D	E	F	G	H	J	K	L	M	N
AREA (sq.ft.)													
Gross Area	1,034	1,097	609	606	604	722	729	735	910	696	621	618	656
Saleable Area	674	715	397	395	394	471	475	479	593	454	405	403	428

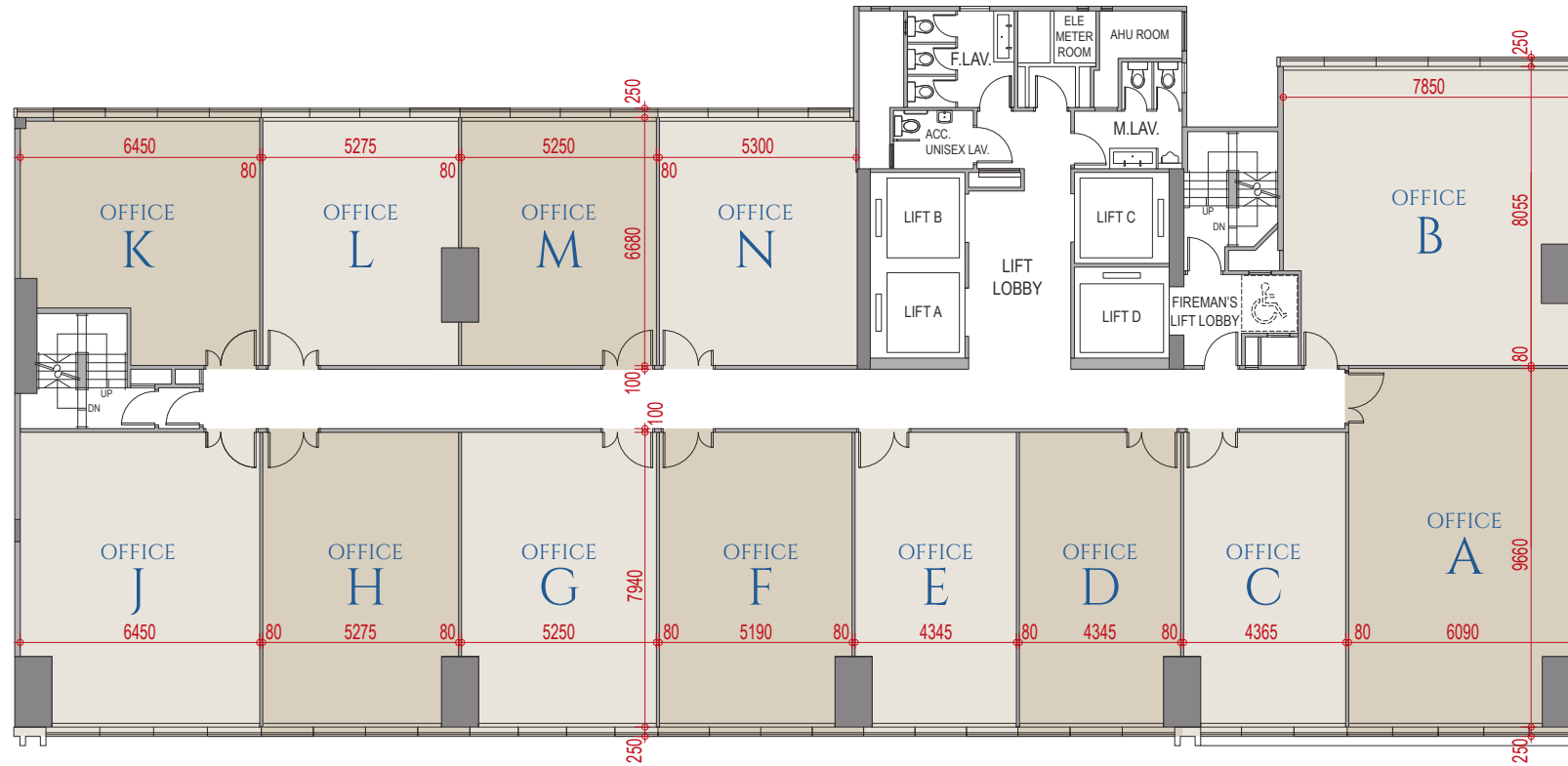
### 備註 Notes

不設4樓、13樓及14樓 Omitted 4/F, 13/F and 14/F

賣方保留權利不時改動發展項目的建築圖則及其他圖則，發展項目的設計以政府相關部門最後批准的圖則為準。The vendor reserves the right to make alterations to the building plans and other plans relating to the Development from time to time, and the design of the Development shall be subject to the final plans approved by the relevant Government authorities. 因較高樓層的結構牆的厚度遞減，較高樓層的單位的內部面積，一般比較低樓層的單位的內部面積稍大。The internal areas of units on upper floors will generally be slightly larger than lower floors due to the reducing thickness of structural walls on upper levels. 樓面平面圖之尺規所列數字為以毫米標示之建築結構尺寸。The dimensions in the floor plans are all structural dimensions in millimetre.

# 7<sup>TH</sup> - 11<sup>TH</sup> FLOOR

SCALE 0m 9m



## AREA SCHEDULE

AREA (sq.ft.)	OFFICE A	OFFICE B	OFFICE C	OFFICE D	OFFICE E	OFFICE F	OFFICE G	OFFICE H	OFFICE J	OFFICE K	OFFICE L	OFFICE M	OFFICE N
Gross Area	1,034	1,101	609	606	604	722	729	735	910	696	621	618	656
Saleable Area	674	718	397	395	394	471	475	479	593	454	405	403	428

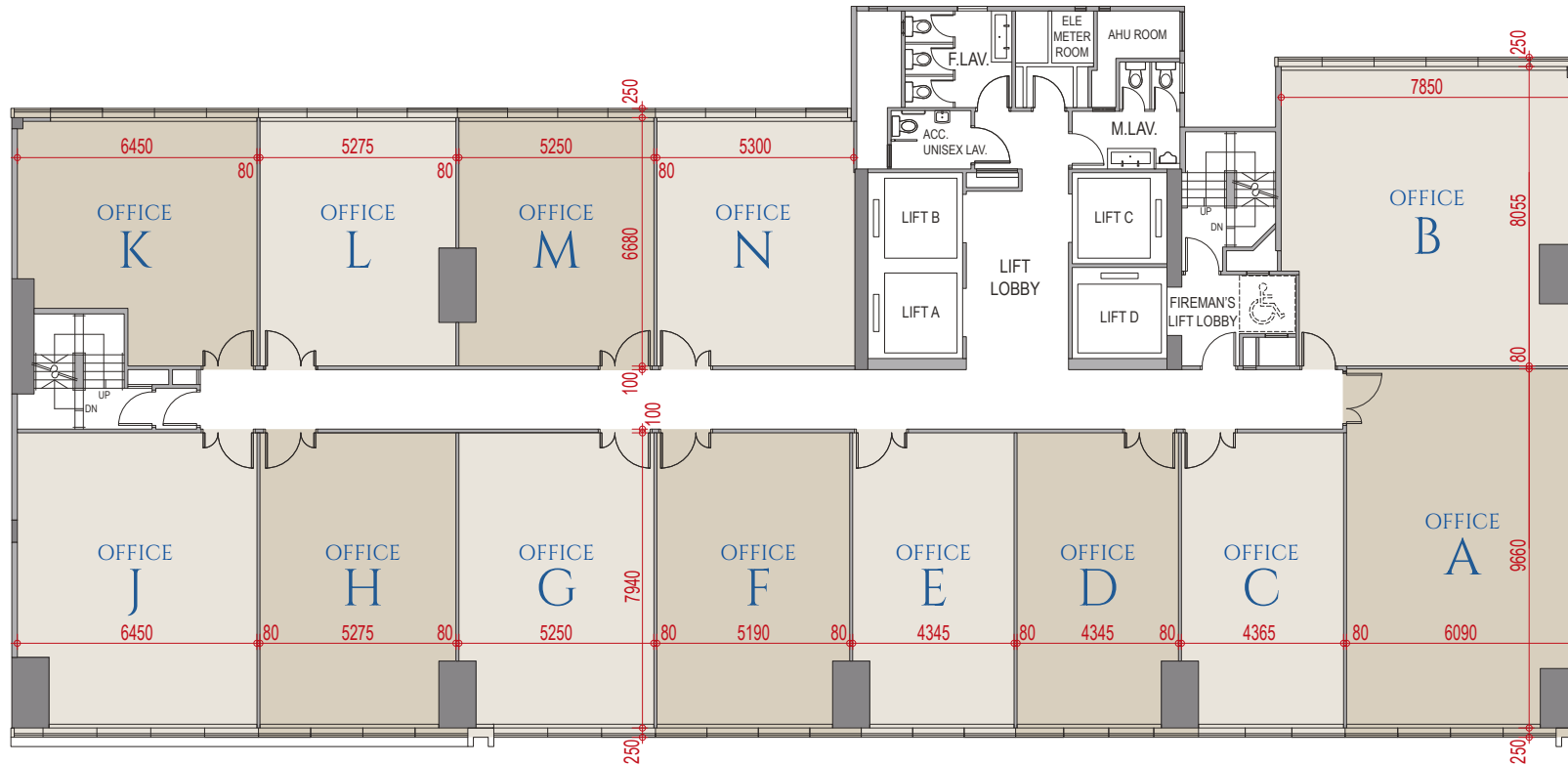
**備註 Notes**

不設4樓、13樓及14樓 Omitted 4/F, 13/F and 14/F

賣方保留權利不時改動發展項目的建築圖則及其他圖則，發展項目的設計以政府相關部門最後批准的圖則為準。The vendor reserves the right to make alterations to the building plans and other plans relating to the Development from time to time, and the design of the Development shall be subject to the final plans approved by the relevant Government authorities. 因較高樓層的結構牆的厚度遞減，較高樓層的單位的內部面積，一般比較低樓層的單位的內部面積稍大。The internal areas of units on upper floors will generally be slightly larger than lower floors due to the reducing thickness of structural walls on upper levels. 樓面平面圖之尺規所列數字為以毫米標示之建築結構尺寸。The dimensions in the floor plans are all structural dimensions in millimetre.

# 12<sup>TH</sup> - 18<sup>TH</sup> FLOOR

SCALE 0m 9m



## AREA SCHEDULE

OFFICE	A	B	C	D	E	F	G	H	J	K	L	M	N
AREA (sq.ft.)													
Gross Area	1,034	1,101	606	607	604	722	729	735	910	696	621	618	656
Saleable Area	674	718	395	396	394	471	475	479	593	454	405	403	428

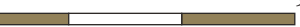
**備註 Notes**

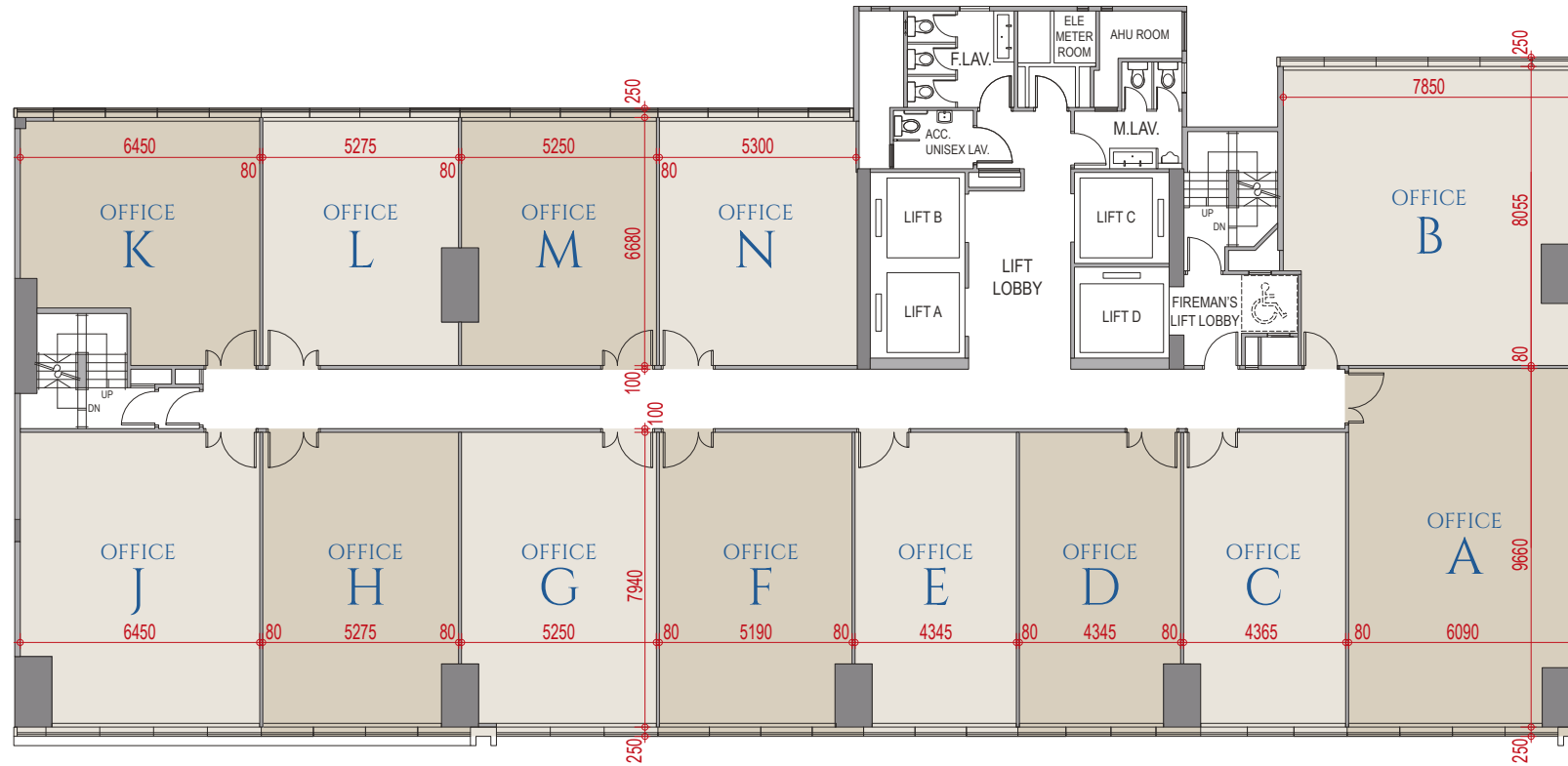
不設4樓、13樓及14樓 Omitted 4/F, 13/F and 14/F

賣方保留權利不時改動發展項目的建築圖則及其他圖則，發展項目的設計以政府相關部門最後批准的圖則為準。The vendor reserves the right to make alterations to the building plans and other plans relating to the Development from time to time, and the design of the Development shall be subject to the final plans approved by the relevant Government authorities. 因較高樓層的結構牆的厚度遞減，較高樓層的單位的內部面積，一般比較低樓層的單位的內部面積稍大。The internal areas of units on upper floors will generally be slightly larger than lower floors due to the reducing thickness of structural walls on upper levels. 樓面平面圖之尺規所列數字為以毫米標示之建築結構尺寸。The dimensions in the floor plans are all structural dimensions in millimetre.



# 19<sup>TH</sup> FLOOR

SCALE 0m  9m



## AREA SCHEDULE

AREA (sq.ft.)	OFFICE A	OFFICE B	OFFICE C	OFFICE D	OFFICE E	OFFICE F	OFFICE G	OFFICE H	OFFICE J	OFFICE K	OFFICE L	OFFICE M	OFFICE N
Gross Area	1,049	1,115	606	607	604	722	729	735	910	696	621	618	656
Saleable Area	684	727	395	396	394	471	475	479	593	454	405	403	428

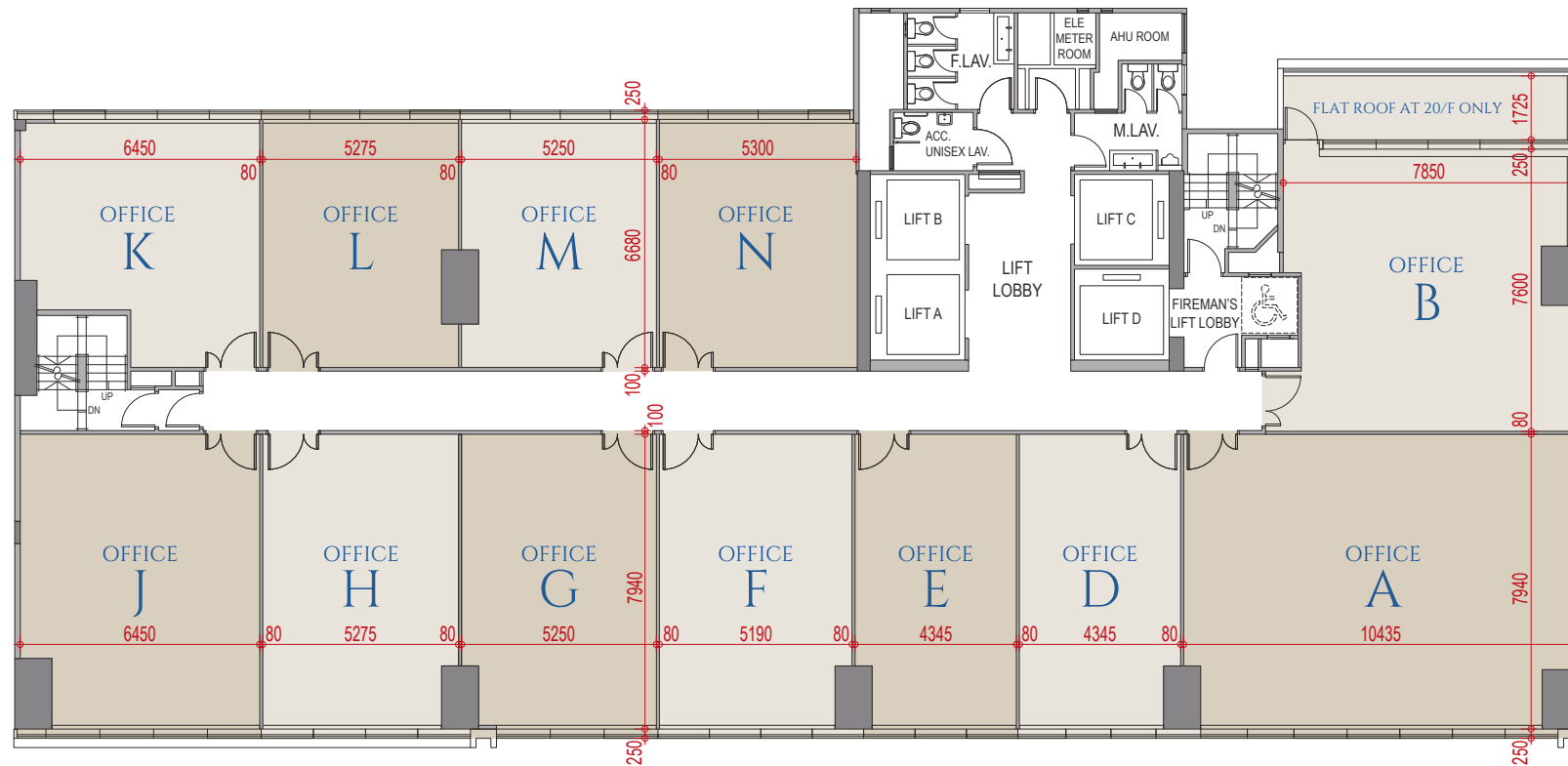
**備註 Notes**

不設4樓、13樓及14樓 Omitted 4/F, 13/F and 14/F

賣方保留權利不時改動發展項目的建築圖則及其他圖則，發展項目的設計以政府相關部門最後批准的圖則為準。The vendor reserves the right to make alterations to the building plans and other plans relating to the Development from time to time, and the design of the Development shall be subject to the final plans approved by the relevant Government authorities. 因較高樓層的結構牆的厚度遞減，較高樓層的單位的內部面積，一般比較低樓層的單位的內部面積稍大。The internal areas of units on upper floors will generally be slightly larger than lower floors due to the reducing thickness of structural walls on upper levels. 樓面平面圖之尺規所列數字為以毫米標示之建築結構尺寸。The dimensions in the floor plans are all structural dimensions in millimetre.

# 20<sup>TH</sup> - 21<sup>ST</sup> FLOOR

SCALE 0m 9m



## AREA SCHEDULE

AREA (sq.ft.)	OFFICE A	OFFICE B	OFFICE D	OFFICE E	OFFICE F	OFFICE G	OFFICE H	OFFICE J	OFFICE K	OFFICE L	OFFICE M	OFFICE N
Gross Area	1,471	1,064	607	604	722	729	735	910	696	621	618	656
Saleable Area	959	694	396	394	471	475	479	593	454	405	403	428
Flat Roof	-	142	-	-	-	-	-	-	-	-	-	-

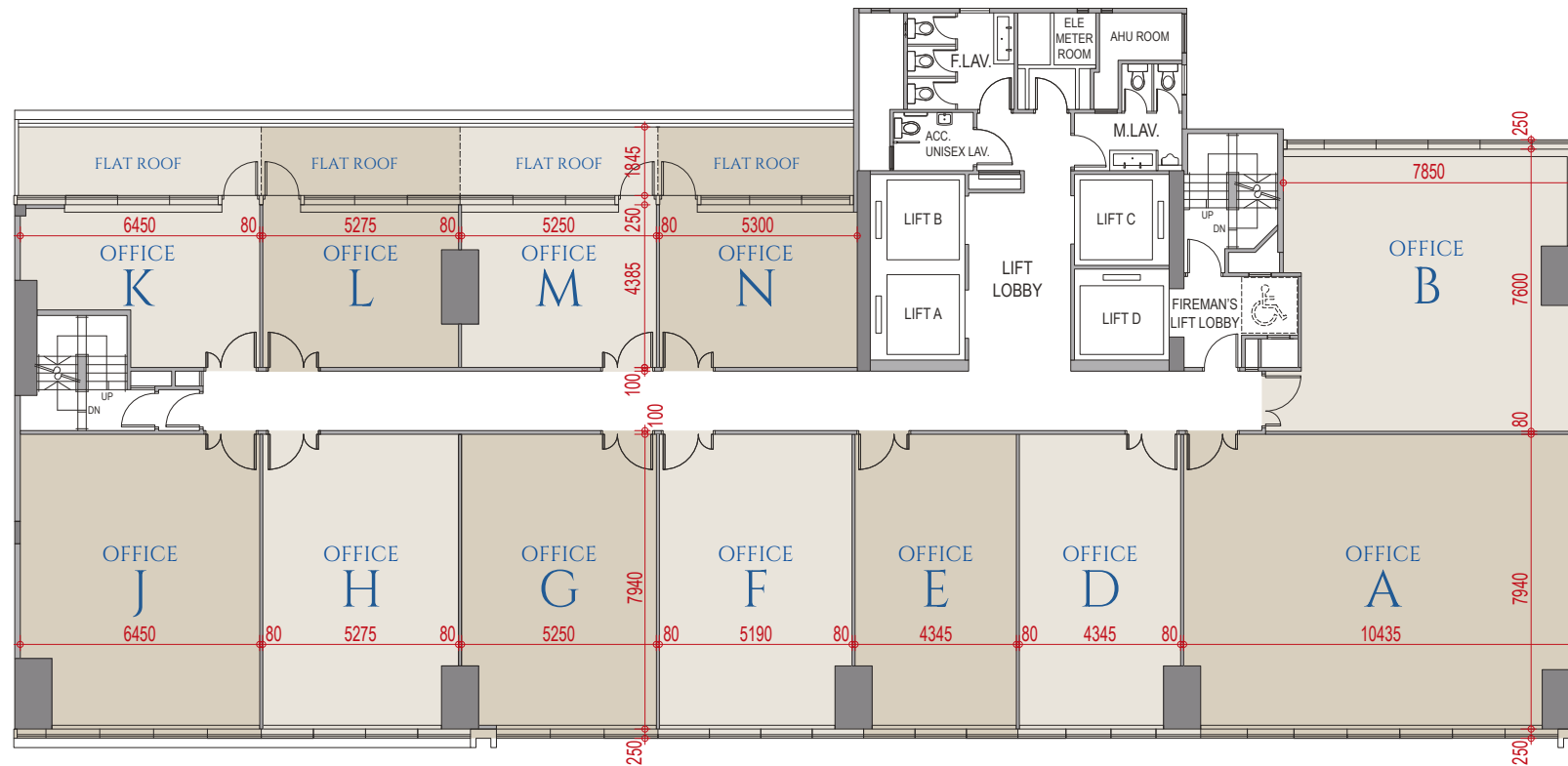
**備註 Notes**

不設4樓、13樓及14樓 Omitted 4/F, 13/F and 14/F

賣方保留權利不時改動發展項目的建築圖則及其他圖則，發展項目的設計以政府相關部門最後批准的圖則為準。The vendor reserves the right to make alterations to the building plans and other plans relating to the Development from time to time, and the design of the Development shall be subject to the final plans approved by the relevant Government authorities. 因較高樓層的結構牆的厚度遞減，較高樓層的單位的內部面積，一般比較低樓層的單位的內部面積稍大。The internal areas of units on upper floors will generally be slightly larger than lower floors due to the reducing thickness of structural walls on upper levels. 樓面平面圖之尺規所列數字為以毫米標示之建築結構尺寸。The dimensions in the floor plans are all structural dimensions in millimetre.

# 22<sup>ND</sup> FLOOR

SCALE 0m  9m



## AREA SCHEDULE

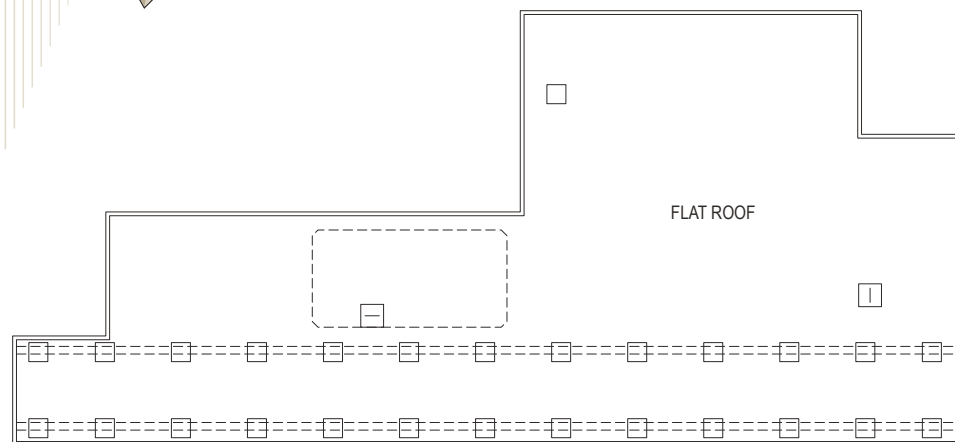
AREA (sq.ft.)	OFFICE A	OFFICE B	OFFICE D	OFFICE E	OFFICE F	OFFICE G	OFFICE H	OFFICE J	OFFICE K	OFFICE L	OFFICE M	OFFICE N
Gross Area	1,471	1,064	607	604	722	729	735	910	445	419	417	448
Saleable Area	959	694	396	394	471	475	479	593	290	273	272	292
Flat Roof	-	-	-	-	-	-	-	-	130	106	106	105

### 備註 Notes

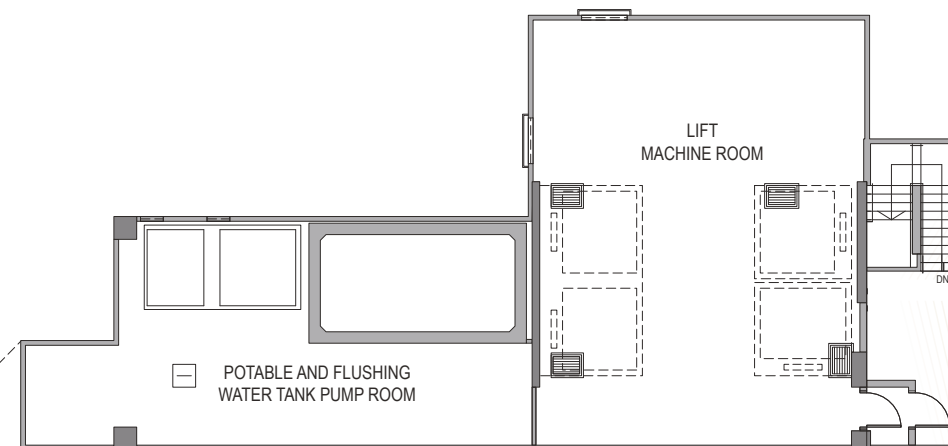
不設4樓、13樓及14樓 Omitted 4/F, 13/F and 14/F

賣方保留權利不時改動發展項目的建築圖則及其他圖則，發展項目的設計以政府相關部門最後批准的圖則為準。The vendor reserves the right to make alterations to the building plans and other plans relating to the Development from time to time, and the design of the Development shall be subject to the final plans approved by the relevant Government authorities. 因較高樓層的結構牆的厚度遞減，較高樓層的單位的內部面積，一般比較低樓層的單位的內部面積稍大。The internal areas of units on upper floors will generally be slightly larger than lower floors due to the reducing thickness of structural walls on upper levels. 樓面平面圖之尺規所列數字為以毫米標示之建築結構尺寸。The dimensions in the floor plans are all structural dimensions in millimetre.

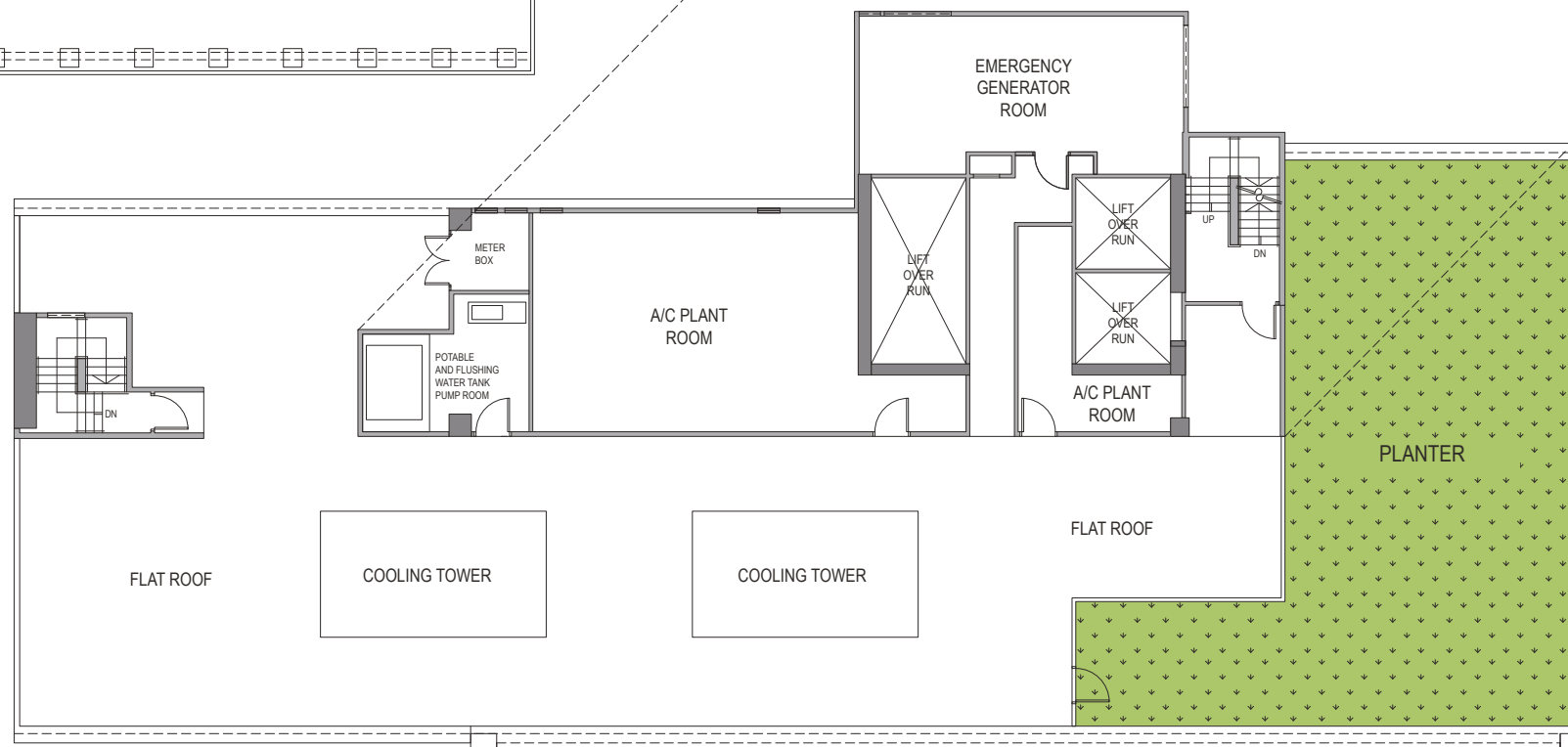
SCALE 0m 9m



TOP ROOF



UPPER ROOF



ROOF PLAN

備註 Notes

不設4樓、13樓及14樓 Omitted 4/F, 13/F and 14/F

賣方保留權利不時改動發展項目的建築圖則及其他圖則。發展項目的設計以政府相關部門最後批准的圖則為準。The vendor reserves the right to make alterations to the building plans and other plans relating to the Development from time to time, and the design of the Development shall be subject to the final plans approved by the relevant Government authorities. 因較高樓層的結構牆的厚度遞減，較高樓層的單位的內部面積，一般比較低樓層的單位的內部面積稍大。The internal areas of units on upper floors will generally be slightly larger than lower floors due to the reducing thickness of structural walls on upper levels. 樓面平面圖之尺規所列數字為以毫米標示之建築結構尺寸。The dimensions in the floor plans are all structural dimensions in millimetre.

# BASEMENT LEVEL 1

SCALE 0m 9m



## 備註 Notes

不設4樓、13樓及14樓 Omitted 4/F, 13/F and 14/F

賣方保留權利不時改動發展項目的建築圖則及其他圖則，發展項目的設計以政府相關部門最後批准的圖則為準。The vendor reserves the right to make alterations to the building plans and other plans relating to the Development from time to time, and the design of the Development shall be subject to the final plans approved by the relevant Government authorities. 因較高樓層的結構牆的厚度遞減，較高樓層的單位的內部面積，一般比較低樓層的單位的內部面積稍大。The internal areas of units on upper floors will generally be slightly larger than lower floors due to the reducing thickness of structural walls on upper levels. 樓面平面圖之尺規所列數字為以毫米標示之建築結構尺寸。The dimensions in the floor plans are all structural dimensions in millimetre.

# BASEMENT LEVEL 2

SCALE 0m 9m



**備註 Notes**

不設4樓、13樓及14樓 Omitted 4/F, 13/F and 14/F

賣方保留權利不時改動發展項目的建築圖則及其他圖則。發展項目的設計以政府相關部門最後批准的圖則為準。The vendor reserves the right to make alterations to the building plans and other plans relating to the Development from time to time, and the design of the Development shall be subject to the final plans approved by the relevant Government authorities. 因較高樓層的結構牆的厚度遞減，較高樓層的單位的內部面積，一般比較低樓層的單位的內部面積稍大。The internal areas of units on upper floors will generally be slightly larger than lower floors due to the reducing thickness of structural walls on upper levels. 樓面平面圖之尺規所列數字為以毫米標示之建築結構尺寸。The dimensions in the floor plans are all structural dimensions in millimetre.

# BASEMENT LEVEL 3

SCALE 0m 9m



**備註 Notes**

不設4樓、13樓及14樓 Omitted 4/F, 13/F and 14/F

賣方保留權利不時改動發展項目的建築圖則及其他圖則，發展項目的設計以政府相關部門最後批准的圖則為準。The vendor reserves the right to make alterations to the building plans and other plans relating to the Development from time to time, and the design of the Development shall be subject to the final plans approved by the relevant Government authorities. 因較高樓層的結構牆的厚度遞減，較高樓層的單位的內部面積，一般比較低樓層的單位的內部面積稍大。The internal areas of units on upper floors will generally be slightly larger than lower floors due to the reducing thickness of structural walls on upper levels. 樓面平面圖之尺規所列數字為以毫米標示之建築結構尺寸。The dimensions in the floor plans are all structural dimensions in millimetre.