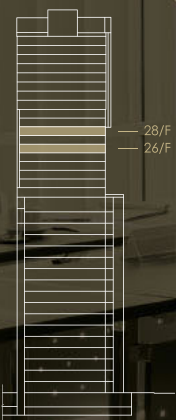
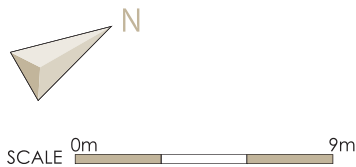
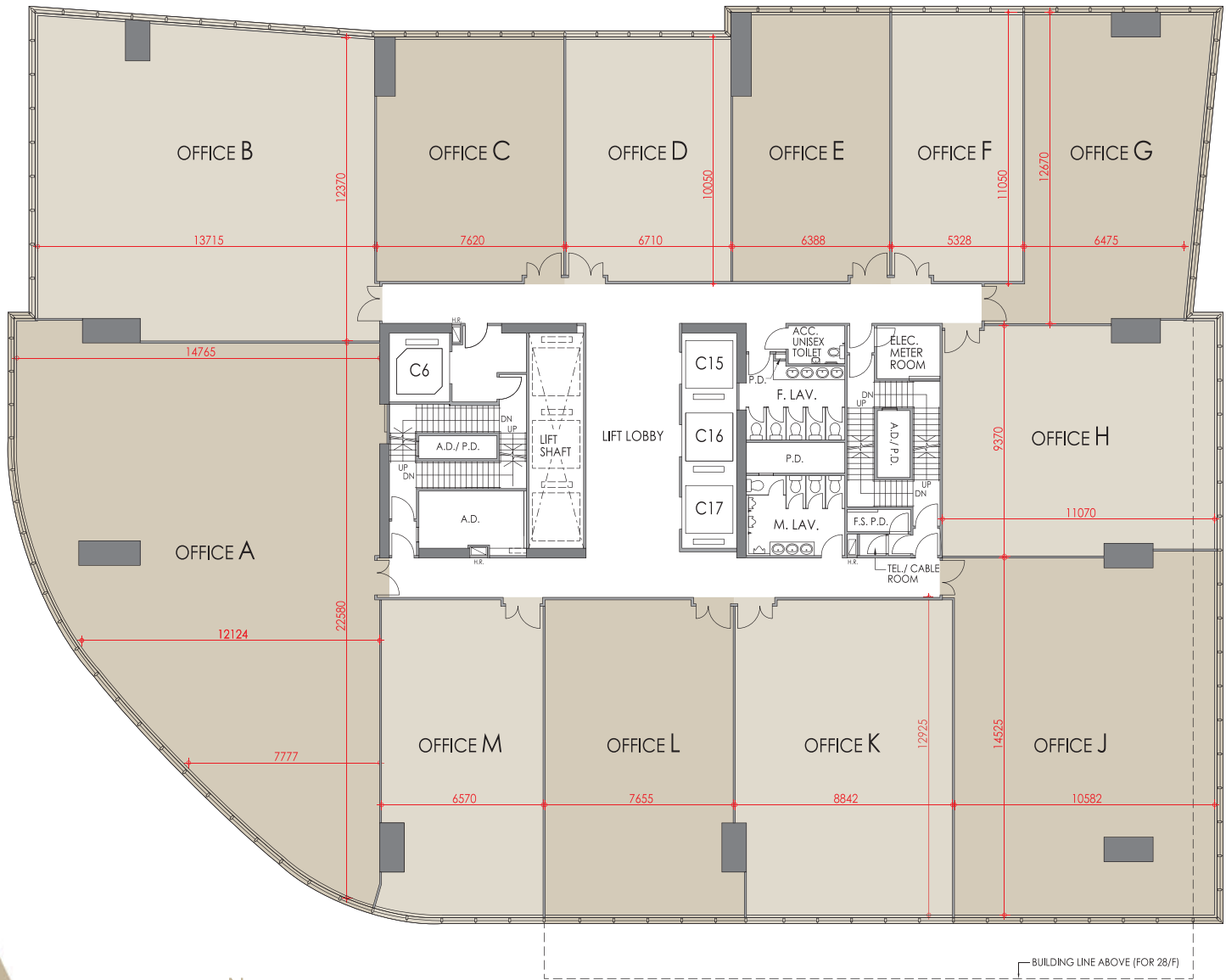


26&28/F OFFICE



Excluding 4/F, 13/F, 14/F, 24/F and 34/F 不設 4、13、14、24 及 34 樓
 The internal areas of units on upper floors are in general slightly larger than lower floors due to possible reduced thickness of structural walls on those floors.
 層數較高單位由於結構牆較低層單位稍薄，因而室內空間或會稍為增多。
 All given information on this promotional material is for reference only and the plan is subject to final Government approved plans and documentation.
 本宣傳資料所提供的資料僅供參考，一切內容均以政府最後批准圖則及法律文件為準。