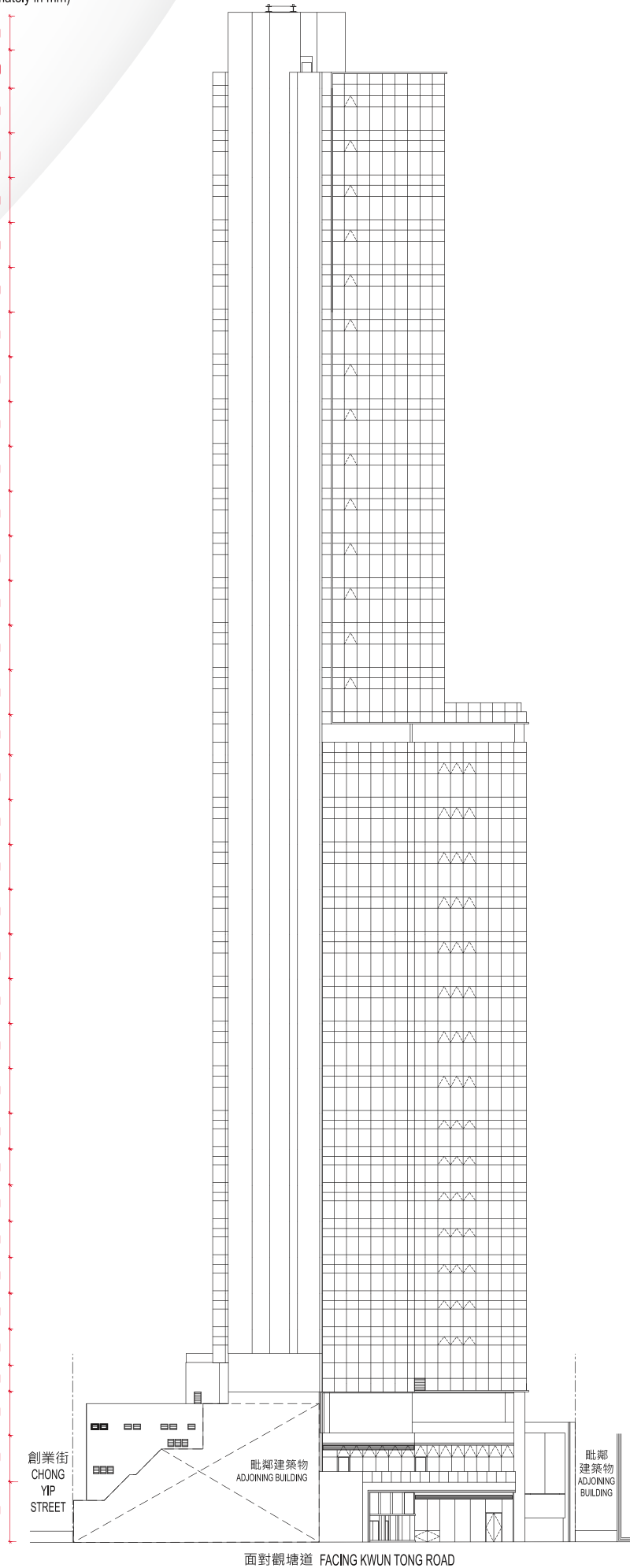


ELEVATION 立面圖

層與層之間的高度(以毫米標示)
Floor to Floor Height
(Approximately in mm)

上層天台	UPPER ROOF	
升降機房	LIFT MACHINE ROOM	3600
天台	ROOF	4100
37樓	37/F	4780
36樓	36/F	4780
35樓	35/F	4780
33樓	33/F	4780
32樓	32/F	4780
31樓	31/F	4780
30樓	30/F	4780
29樓	29/F	4780
28樓	28/F	4780
27樓	27/F	4780
26樓	26/F	4780
25樓	25/F	4780
23樓	23/F	4780
22樓	22/F	4780
21樓 (庇護層)	21/F (REFUGE FLOOR)	4300
20樓	20/F	4780
19樓	19/F	4780
18樓	18/F	4780
17樓	17/F	4780
16樓	16/F	4780
15樓	15/F	4780
12樓	12/F	4780
11樓	11/F	4780
10樓	10/F	3850
9樓	9/F	3850
8樓	8/F	3850
7樓	7/F	3850
6樓	6/F	3850
5樓	5/F	3850
3樓	3/F	3850
結構轉換	TRANSFER GIRDER	2800
2樓	2/F	4700
1樓	1/F	4950
地下	G/F	6400



備註 Notes

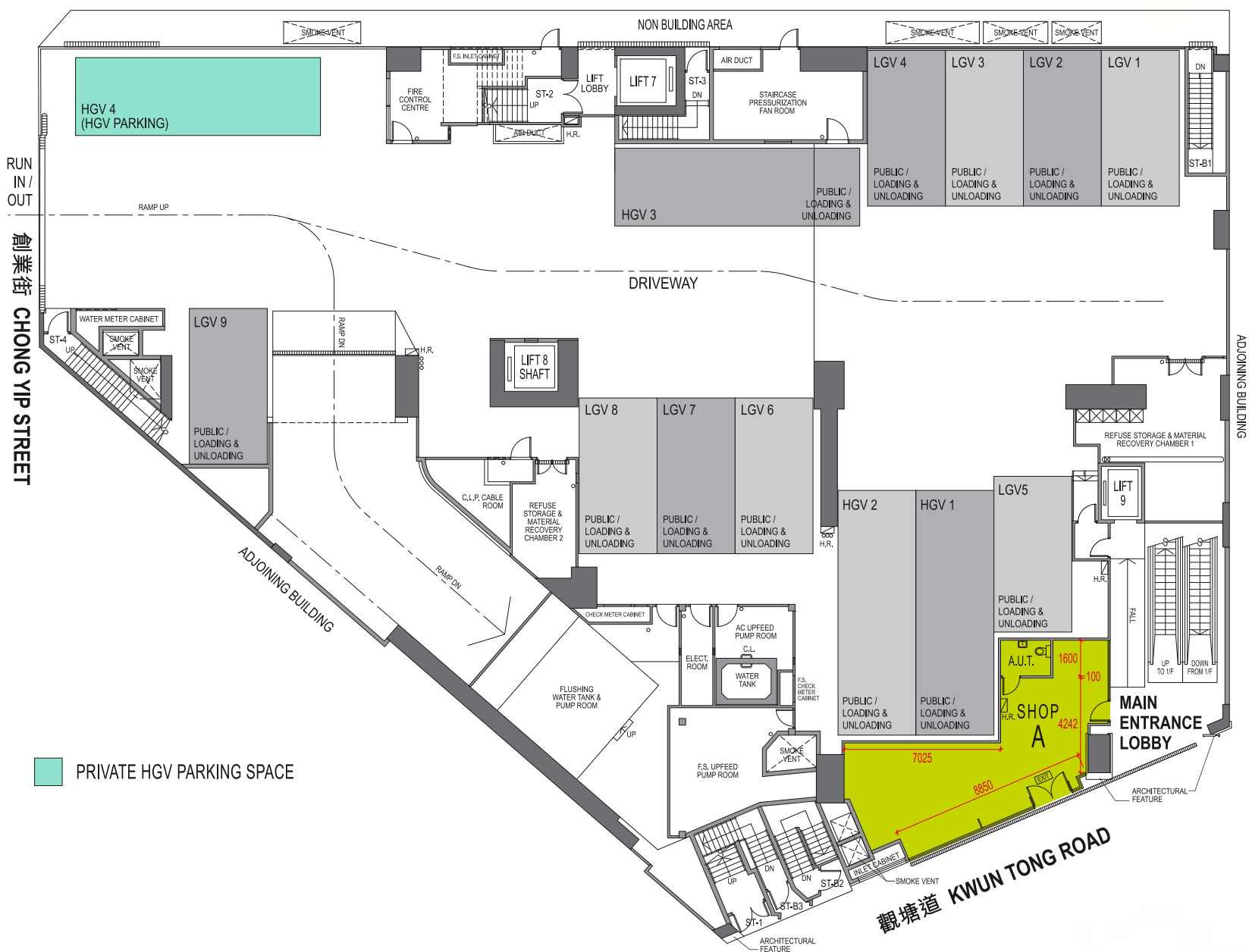
不設4樓、13樓、14樓、24樓及34樓 Omitted 4/F, 13/F, 14/F, 24/F and 34/F

賣方保留權利不時改動發展項目的建築圖則及其他圖則。發展項目的設計以政府相關部門最後批准的圖則為準。The vendor reserves the right to make alterations to the building plans and other plans relating to the Development from time to time, and the design of the Development shall be subject to the final plans approved by the relevant Government authorities. 因較高樓層的結構牆的厚度遞減，較高樓層的單位的內部面積，一般比較低樓層的單位的內部面積稍大。The internal areas of units on upper floors will generally be slightly larger than lower floors due to the reducing thickness of structural walls on upper levels. 樓面平面圖之尺規所列數字為以毫米標示之建築結構尺寸。The dimensions in the floor plans are all structural dimensions in millimetre. 層與層之間的高度指該樓層之石屎地台面與上一層石屎地台面之高度距離。Floor-to-floor height refers to the height between the top surface of the structural slab of a floor and the top surface of its immediate upper floor.

GROUND FLOOR



SCALE 0m 9m



AREA SCHEDULE

	SHOP	A
AREA (sq.ft.)		
Gross Floor Area		1,159
Saleable Area		755

備註 Notes

不設4樓、13樓、14樓、24樓及34樓 Omitted 4/F, 13/F, 14/F, 24/F and 34/F

賣方保留權利不時改動發展項目的建築圖則及其他圖則，發展項目的設計以政府相關部門最後批准的圖則為準。The vendor reserves the right to make alterations to the building plans and other plans relating to the Development from time to time, and the design of the Development shall be subject to the final plans approved by the relevant Government authorities.

因較高樓層的結構牆的厚度遞減，較高樓層的單位的內部面積，一般比較低樓層的單位的內部面積稍大。The internal areas of units on upper floors will generally be slightly larger than lower floors due to the reducing thickness of structural walls on upper levels.

樓面平面圖之尺規所列數字為以毫米標示之建築結構尺寸。The dimensions in the floor plans are all structural dimensions in millimetre.

1ST FLOOR



SCALE 0m 9m

● WATER POINT



AREA SCHEDULE

AREA (sq.ft.)	SHOP	A	B	C	D	E	F
Gross Floor Area		5,518	825	789	958	1,305	1,314
Saleable Area		3,593	537	514	624	850	856
Flat Roof		504	-	-	-	-	-

備註 Notes

不設4樓、13樓、14樓、24樓及34樓 Omitted 4/F, 13/F, 14/F, 24/F and 34/F

賣方保留權利不時改動發展項目的建築圖則及其他圖則。發展項目的設計以政府相關部門最後批准的圖則為準。The vendor reserves the right to make alterations to the building plans and other plans relating to the Development from time to time, and the design of the Development shall be subject to the final plans approved by the relevant Government authorities.

因較高樓層的結構牆的厚度遞減，較高樓層的單位的內部面積，一般比較低樓層的單位的內部面積稍大。The internal areas of units on upper floors will generally be slightly larger than lower floors due to the reducing thickness of structural walls on upper levels.

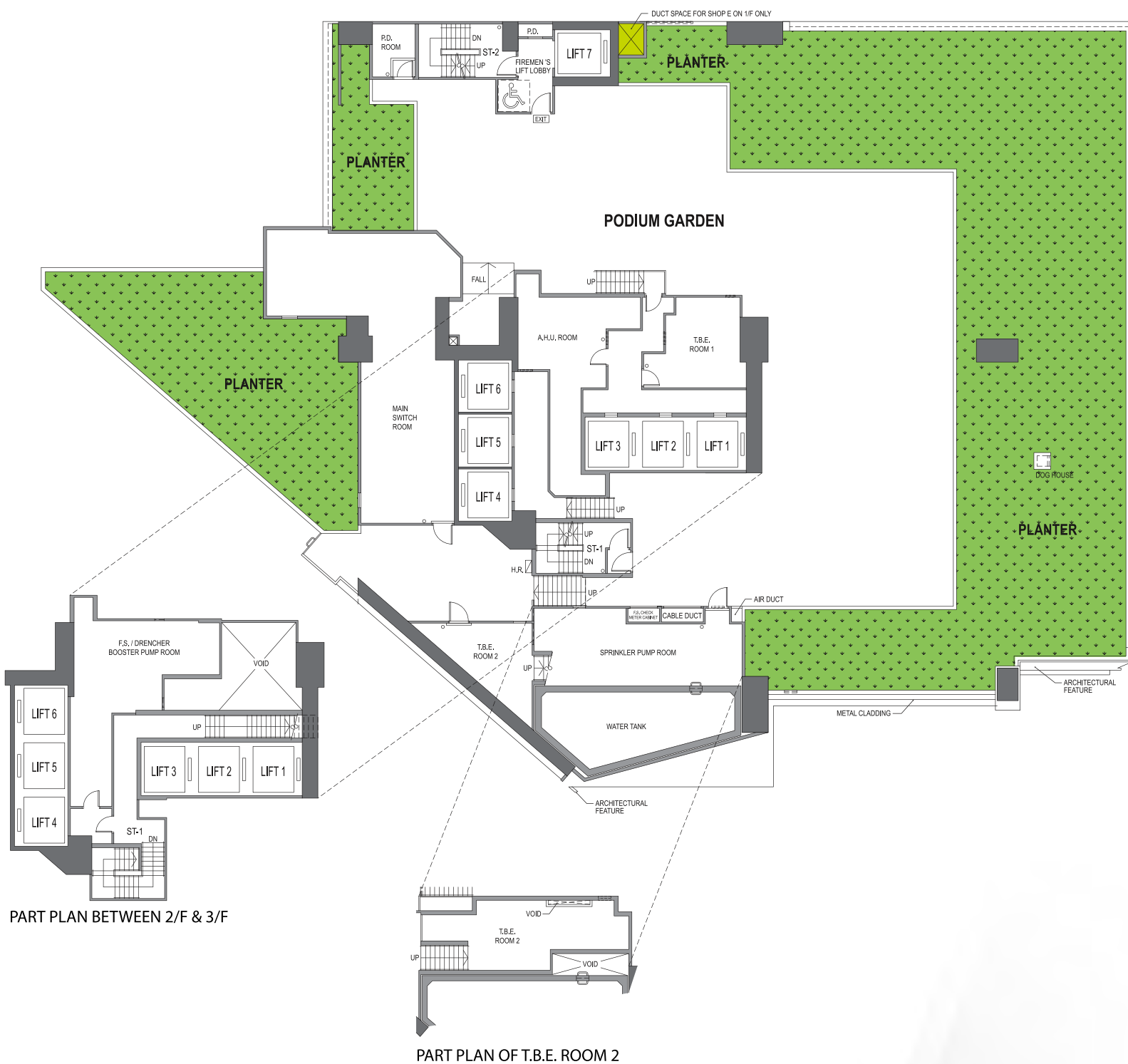
樓面平面圖之尺規所列數字為以毫米標示之建築結構尺寸。The dimensions in the floor plans are all structural dimensions in millimetre.



SCALE 0m 9m

2ND FLOOR

PODIUM GARDEN



備註 Notes

不設4樓、13樓、14樓、24樓及34樓 Omitted 4/F, 13/F, 14/F, 24/F and 34/F

賣方保留權利不時改動發展項目的建築圖則及其他圖則。發展項目的設計以政府相關部門最後批准的圖則為準。The vendor reserves the right to make alterations to the building plans and other plans relating to the Development from time to time, and the design of the Development shall be subject to the final plans approved by the relevant Government authorities.

因較高樓層的結構牆的厚度遞減，較高樓層的單位的內部面積，一般比較低樓層的單位的內部面積稍大。The internal areas of units on upper floors will generally be slightly larger than lower floors due to the reducing thickness of structural walls on upper levels.

樓面平面圖之尺規所列數字為以毫米標示之建築結構尺寸。The dimensions in the floor plans are all structural dimensions in millimetre.



SCALE 0m 9m

3RD FLOOR



AREA SCHEDULE

AREA (sq.ft.)	OFFICE	A	B	C	D	E	F	G	H	J
Gross Floor Area		2,262	763	1,167	940	654	1,483	1,382	1,124	992
Saleable Area		1,473	497	760	612	426	966	900	732	646
Flat Roof		142	-	-	-	-	-	186	86	119

備註 Notes

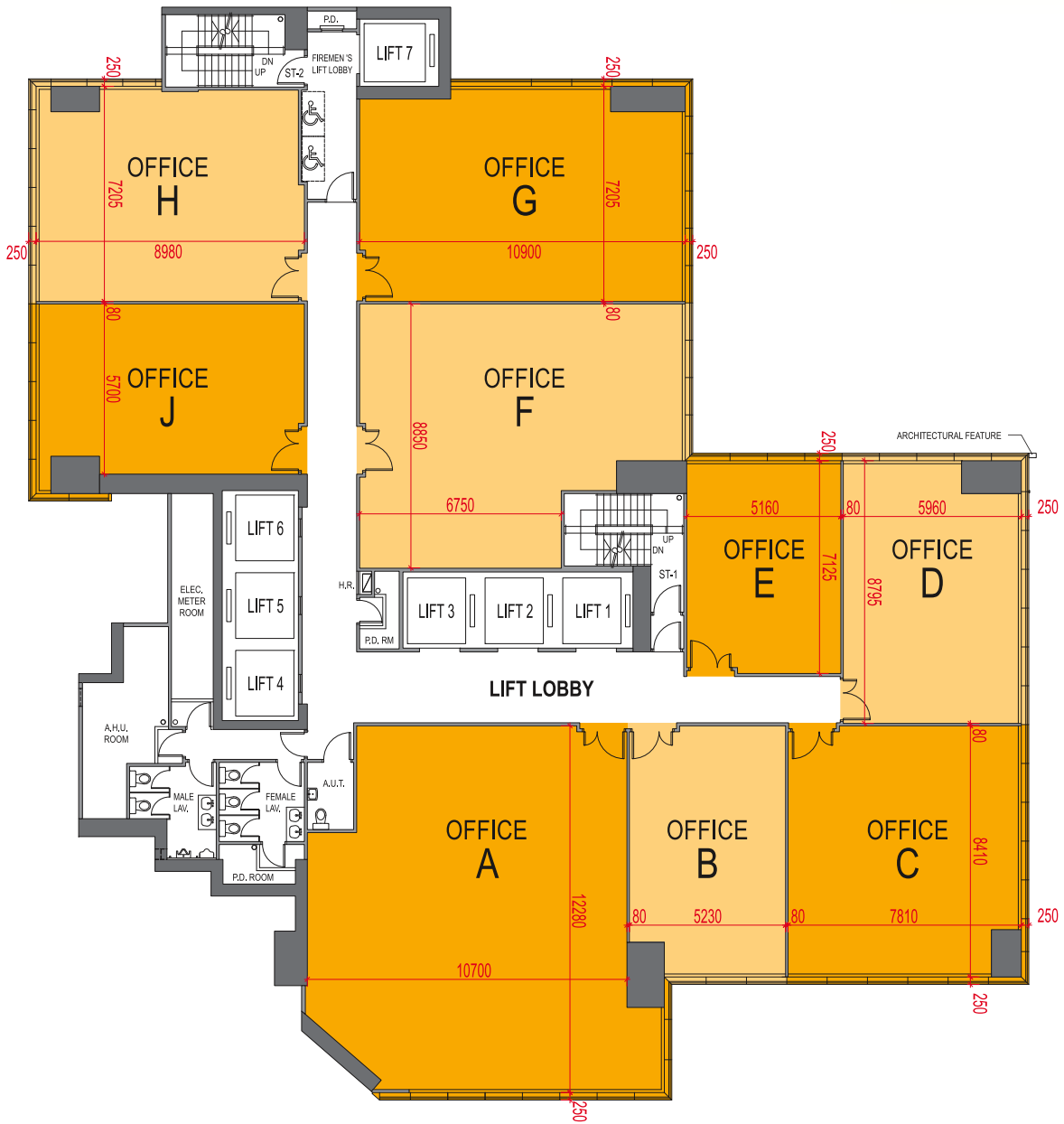
不設4樓、13樓、14樓、24樓及34樓 Omitted 4/F, 13/F, 14/F, 24/F and 34/F

賣方保留權利不時改動發展項目的建築圖則及其他圖則。發展項目的設計以政府相關部門最後批准的圖則為準。The vendor reserves the right to make alterations to the building plans and other plans relating to the Development from time to time, and the design of the Development shall be subject to the final plans approved by the relevant Government authorities.

因較高樓層的結構牆的厚度遞減，較高樓層的單位的內部面積，一般比較低樓層的單位的內部面積稍大。The internal areas of units on upper floors will generally be slightly larger than lower floors due to the reducing thickness of structural walls on upper levels.

樓面平面圖之尺規所列數字為以毫米標示之建築結構尺寸。The dimensions in the floor plans are all structural dimensions in millimetre.

5TH - 6TH FLOOR



AREA SCHEDULE

OFFICE	A	B	C	D	E	F	G	H	J
AREA (sq.ft.)									
Gross Floor Area	2,262	763	1,167	940	654	1,483	1,382	1,124	992
Saleable Area	1,473	497	760	612	426	966	900	732	646

備註 Notes

不設4樓、13樓、14樓、24樓及34樓 Omitted 4/F, 13/F, 14/F, 24/F and 34/F

賣方保留權利不時改動發展項目的建築圖則及其他圖則。發展項目的設計以政府相關部門最後批准的圖則為準。The vendor reserves the right to make alterations to the building plans and other plans relating to the Development from time to time, and the design of the Development shall be subject to the final plans approved by the relevant Government authorities.

因較高樓層的結構牆的厚度遞減，較高樓層的單位的內部面積，一般比較低樓層的單位的內部面積稍大。The internal areas of units on upper floors will generally be slightly larger than lower floors due to the reducing thickness of structural walls on upper levels.

樓面平面圖之尺規所列數字為以毫米標示之建築結構尺寸。The dimensions in the floor plans are all structural dimensions in millimetre.

7TH - 8TH FLOOR



SCALE 0m 9m



AREA SCHEDULE

AREA (sq.ft.)	OFFICE A	OFFICE B	OFFICE C	OFFICE D	OFFICE E	OFFICE F	OFFICE G	OFFICE H	OFFICE J
Gross Floor Area	2,262	763	1,167	940	654	1,483	1,382	1,124	992
Saleable Area	1,473	497	760	612	426	966	900	732	646

備註 Notes

不設4樓、13樓、14樓、24樓及34樓 Omitted 4/F, 13/F, 14/F, 24/F and 34/F

賣方保留權利不時改動發展項目的建築圖則及其他圖則。發展項目的設計以政府相關部門最後批准的圖則為準。The vendor reserves the right to make alterations to the building plans and other plans relating to the Development from time to time, and the design of the Development shall be subject to the final plans approved by the relevant Government authorities.

因較高樓層的結構牆的厚度遞減，較高樓層的單位的內部面積，一般比較低樓層的單位的內部面積稍大。The internal areas of units on upper floors will generally be slightly larger than lower floors due to the reducing thickness of structural walls on upper levels.

樓面平面圖之尺規所列數字為以毫米標示之建築結構尺寸。The dimensions in the floor plans are all structural dimensions in millimetre.

9TH - 10TH FLOOR



SCALE 0m 9m



AREA SCHEDULE

AREA (sq.ft.)	OFFICE	A	B	C	D	E	F	G	H	J
Gross Floor Area		2,265	760	1,167	940	654	1,483	1,382	1,124	992
Saleable Area		1,475	495	760	612	426	966	900	732	646

備註 Notes

不設4樓、13樓、14樓、24樓及34樓 Omitted 4/F, 13/F, 14/F, 24/F and 34/F

賣方保留權利不時改動發展項目的建築圖則及其他圖則。發展項目的設計以政府相關部門最後批准的圖則為準。The vendor reserves the right to make alterations to the building plans and other plans relating to the Development from time to time, and the design of the Development shall be subject to the final plans approved by the relevant Government authorities.

因較高樓層的結構牆的厚度遞減，較高樓層的單位的內部面積，一般比較低樓層的單位的內部面積稍大。The internal areas of units on upper floors will generally be slightly larger than lower floors due to the reducing thickness of structural walls on upper levels.

樓面平面圖之尺規所列數字為以毫米標示之建築結構尺寸。The dimensions in the floor plans are all structural dimensions in millimetre.



SCALE 0m 9m

11TH FLOOR



AREA SCHEDULE

AREA (sq.ft.)	OFFICE	A	B	C	D	E	F	G	H	J
Gross Floor Area		2,265	760	1,167	940	654	1,522	1,382	1,129	992
Saleable Area		1,475	495	760	612	426	991	900	735	646

備註 Notes

不設4樓、13樓、14樓、24樓及34樓 Omitted 4/F, 13/F, 14/F, 24/F and 34/F

賣方保留權利不時改動發展項目的建築圖則及其他圖則。發展項目的設計以政府相關部門最後批准的圖則為準。The vendor reserves the right to make alterations to the building plans and other plans relating to the Development from time to time, and the design of the Development shall be subject to the final plans approved by the relevant Government authorities.

因較高樓層的結構牆的厚度遞減，較高樓層的單位的內部面積，一般比較低樓層的單位的內部面積稍大。The internal areas of units on upper floors will generally be slightly larger than lower floors due to the reducing thickness of structural walls on upper levels.

樓面平面圖之尺規所列數字為以毫米標示之建築結構尺寸。The dimensions in the floor plans are all structural dimensions in millimetre.

12TH & 15TH FLOOR



SCALE 0m 9m



AREA SCHEDULE

OFFICE	A	B	C	D	E	F	G	H	J
AREA (sq.ft.)									
Gross Floor Area	2,265	760	1,167	940	654	1,522	1,382	1,129	992
Saleable Area	1,475	495	760	612	426	991	900	735	646

備註 Notes

不設4樓、13樓、14樓、24樓及34樓 Omitted 4/F, 13/F, 14/F, 24/F and 34/F

賣方保留權利不時改動發展項目的建築圖則及其他圖則。發展項目的設計以政府相關部門最後批准的圖則為準。The vendor reserves the right to make alterations to the building plans and other plans relating to the Development from time to time, and the design of the Development shall be subject to the final plans approved by the relevant Government authorities.

因較高樓層的結構牆的厚度遞減，較高樓層的單位的內部面積，一般比較低樓層的單位的內部面積稍大。The internal areas of units on upper floors will generally be slightly larger than lower floors due to the reducing thickness of structural walls on upper levels.

樓面平面圖之尺規所列數字為以毫米標示之建築結構尺寸。The dimensions in the floor plans are all structural dimensions in millimetre.

16TH - 20TH FLOOR



SCALE 0m 9m



AREA SCHEDULE

AREA (sq.ft.)	OFFICE	A	B	C	D	E	F	G	H	J
Gross Floor Area		2,265	760	1,167	940	654	1,522	1,382	1,129	992
Saleable Area		1,475	495	760	612	426	991	900	735	646

備註 Notes

不設4樓、13樓、14樓、24樓及34樓 Omitted 4/F, 13/F, 14/F, 24/F and 34/F

賣方保留權利不時改動發展項目的建築圖則及其他圖則。發展項目的設計以政府相關部門最後批准的圖則為準。The vendor reserves the right to make alterations to the building plans and other plans relating to the Development from time to time, and the design of the Development shall be subject to the final plans approved by the relevant Government authorities.

因較高樓層的結構牆的厚度遞減，較高樓層的單位的內部面積，一般比較低樓層的單位的內部面積稍大。The internal areas of units on upper floors will generally be slightly larger than lower floors due to the reducing thickness of structural walls on upper levels.

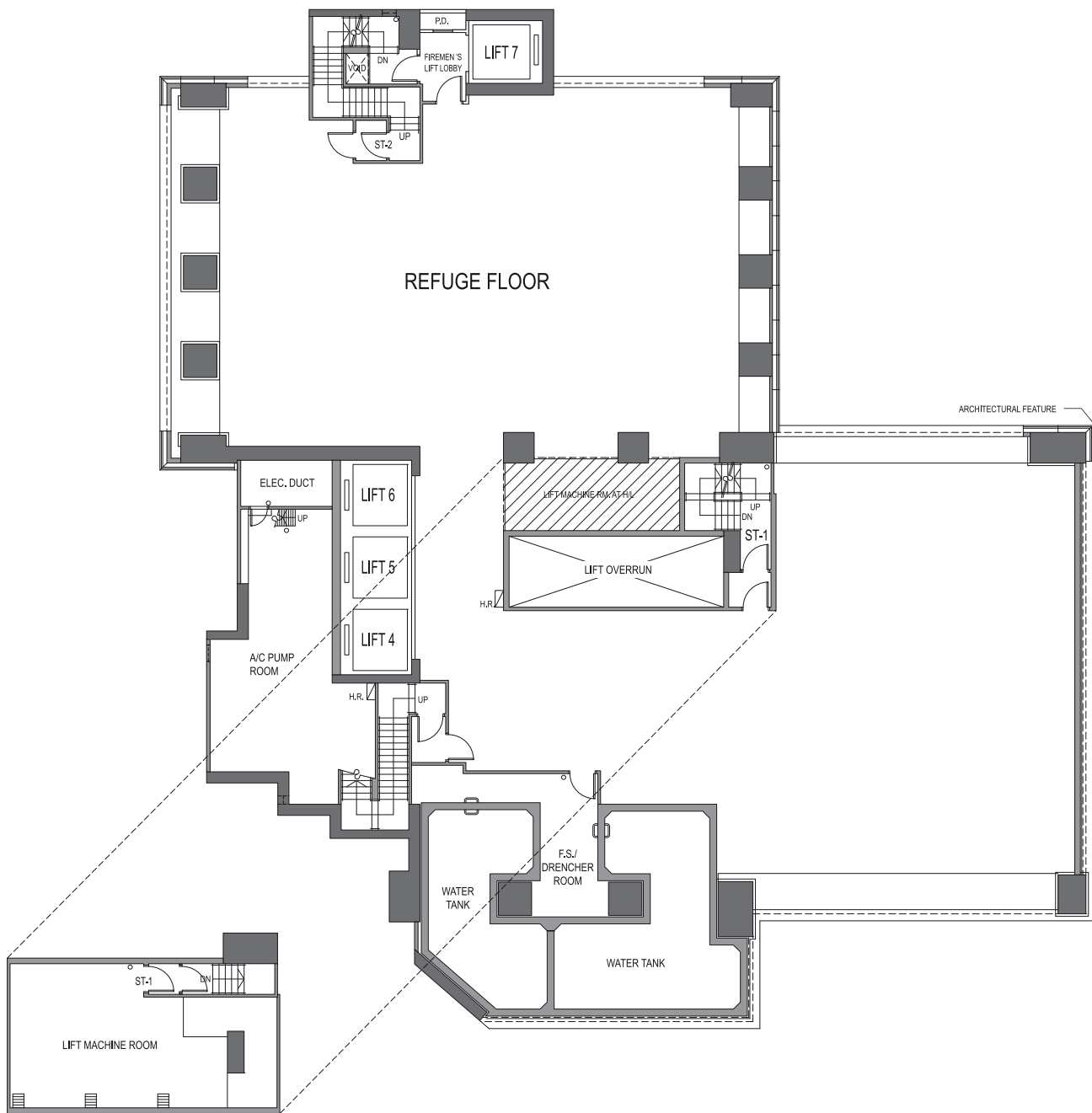
樓面平面圖之尺規所列數字為以毫米標示之建築結構尺寸。The dimensions in the floor plans are all structural dimensions in millimetre.



SCALE 0m 9m

21ST FLOOR

REFUGE FLOOR



PART PLAN
(FOR STAIRCASE ST-1 & LIFT MACHINE RM.)

備註 Notes

不設4樓、13樓、14樓、24樓及34樓 Omitted 4/F, 13/F, 14/F, 24/F and 34/F

賣方保留權利不時改動發展項目的建築圖則及其他圖則。發展項目的設計以政府相關部門最後批准的圖則為準。The vendor reserves the right to make alterations to the building plans and other plans relating to the Development from time to time, and the design of the Development shall be subject to the final plans approved by the relevant Government authorities.

因較高樓層的結構牆的厚度遞減，較高樓層的單位的內部面積，一般比較低樓層的單位的內部面積稍大。The internal areas of units on upper floors will generally be slightly larger than lower floors due to the reducing thickness of structural walls on upper levels.

樓面平面圖之尺規所列數字為以毫米標示之建築結構尺寸。The dimensions in the floor plans are all structural dimensions in millimetre.

22ND FLOOR



AREA SCHEDULE

AREA (sq.ft.)	OFFICE	A	B	C	D	E	F
Gross Floor Area		2,872	2,035	1,164	1,382	1,129	987
Saleable Area		1,870	1,325	758	900	735	643
Flat Roof		620	905	-	-	-	-

備註 Notes

不設4樓、13樓、14樓、24樓及34樓 Omitted 4/F, 13/F, 14/F, 24/F and 34/F

賣方保留權利不時改動發展項目的建築圖則及其他圖則。發展項目的設計以政府相關部門最後批准的圖則為準。The vendor reserves the right to make alterations to the building plans and other plans relating to the Development from time to time, and the design of the Development shall be subject to the final plans approved by the relevant Government authorities.

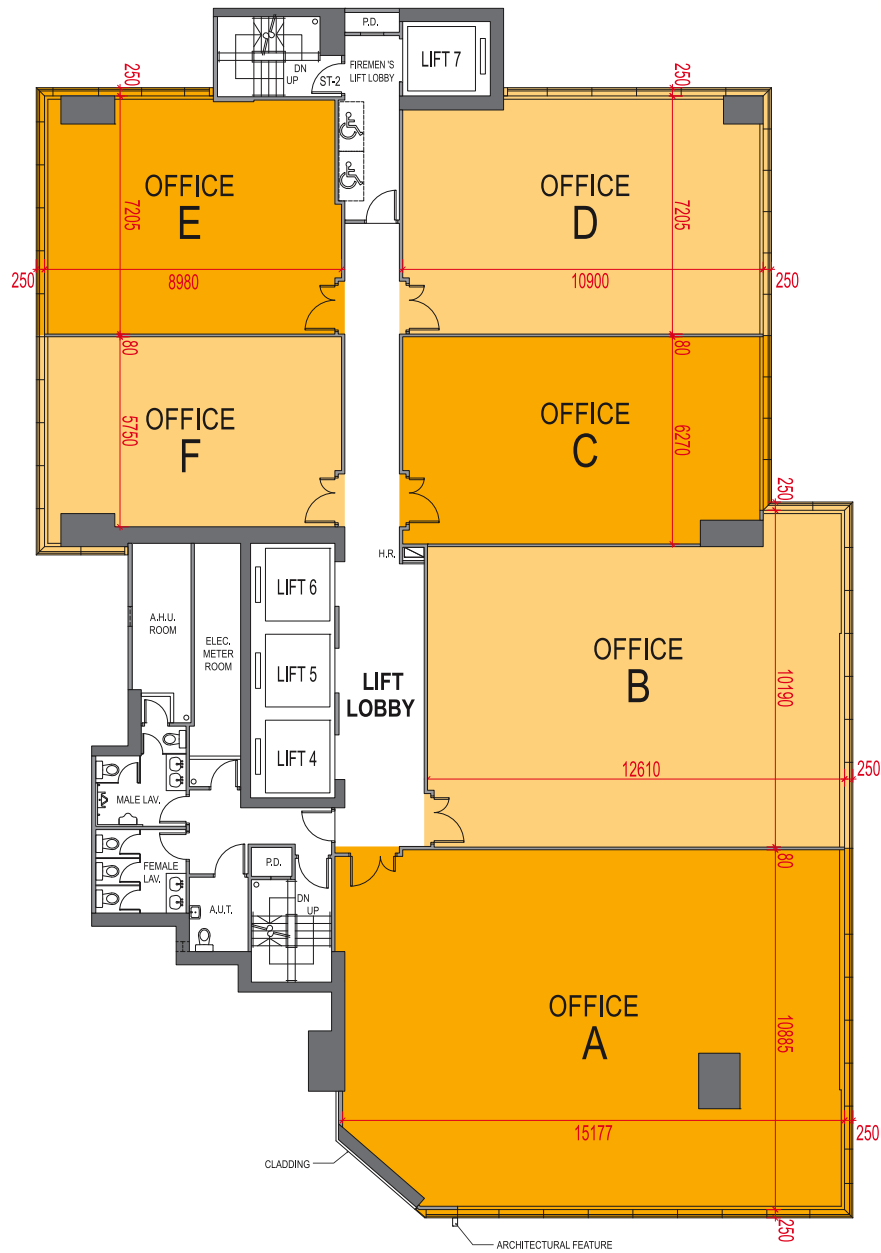
因較高樓層的結構牆的厚度遞減，較高樓層的單位的內部面積，一般比較低樓層的單位的內部面積稍大。The internal areas of units on upper floors will generally be slightly larger than lower floors due to the reducing thickness of structural walls on upper levels.

樓面平面圖之尺規所列數字為以毫米標示之建築結構尺寸。The dimensions in the floor plans are all structural dimensions in millimetre.

23RD-27TH FLOOR



SCALE 0m 9m



AREA SCHEDULE

AREA (sq.ft.)	OFFICE	A	B	C	D	E	F
Gross Floor Area		2,869	2,035	1,164	1,382	1,129	987
Saleable Area		1,868	1,325	758	900	735	643

備註 Notes

不設4樓、13樓、14樓、24樓及34樓 Omitted 4/F, 13/F, 14/F, 24/F and 34/F

賣方保留權利不時改動發展項目的建築圖則及其他圖則。發展項目的設計以政府相關部門最後批准的圖則為準。The vendor reserves the right to make alterations to the building plans and other plans relating to the Development from time to time, and the design of the Development shall be subject to the final plans approved by the relevant Government authorities.

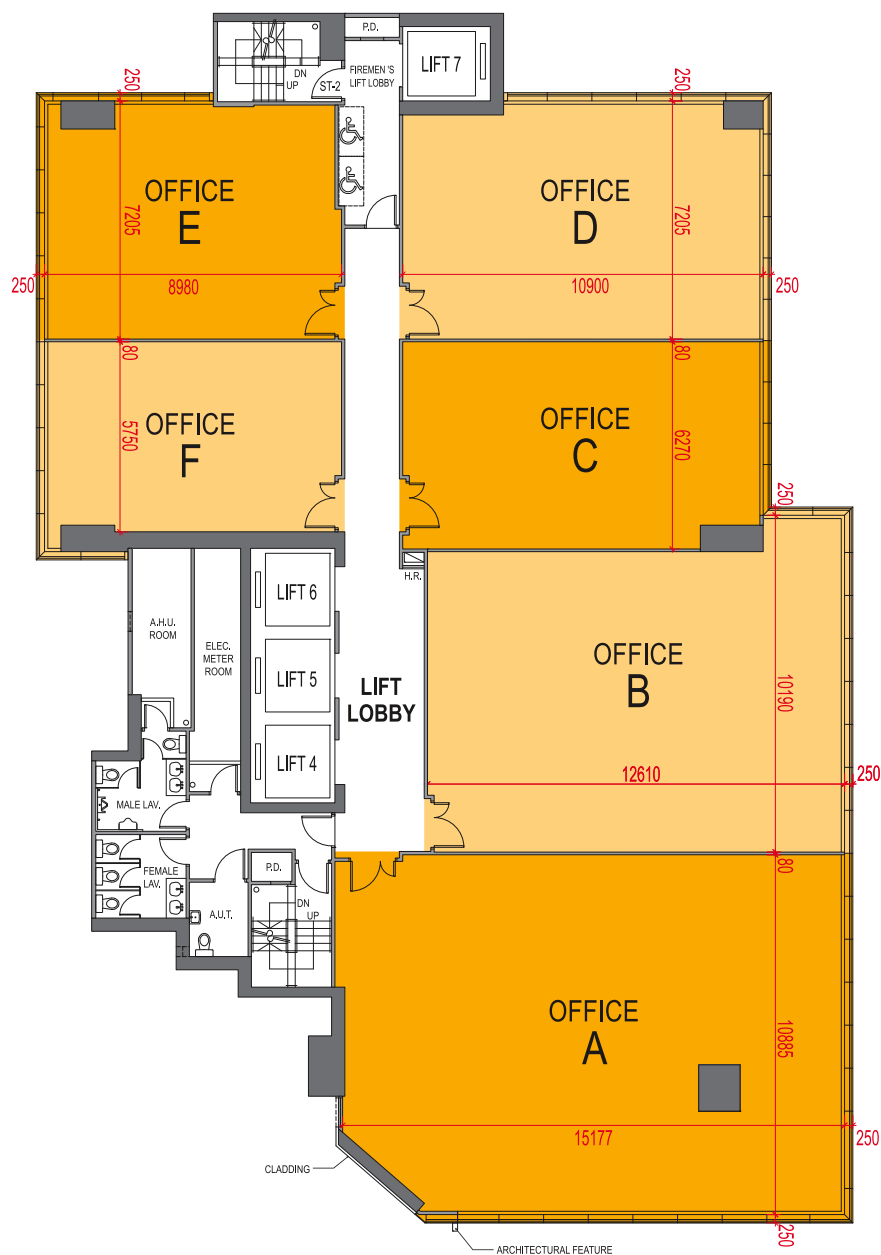
因較高樓層的結構牆的厚度遞減，較高樓層的單位的內部面積，一般比較低樓層的單位的內部面積稍大。The internal areas of units on upper floors will generally be slightly larger than lower floors due to the reducing thickness of structural walls on upper levels.

樓面平面圖之尺規所列數字為以毫米標示之建築結構尺寸。The dimensions in the floor plans are all structural dimensions in millimetre.

28TH-32ND FLOOR



SCALE 0m 9m



AREA SCHEDULE

AREA (sq.ft.)	OFFICE	A	B	C	D	E	F
Gross Floor Area		2,869	2,035	1,164	1,382	1,129	987
Saleable Area		1,868	1,325	758	900	735	643

備註 Notes

不設4樓、13樓、14樓、24樓及34樓 Omitted 4/F, 13/F, 14/F, 24/F and 34/F

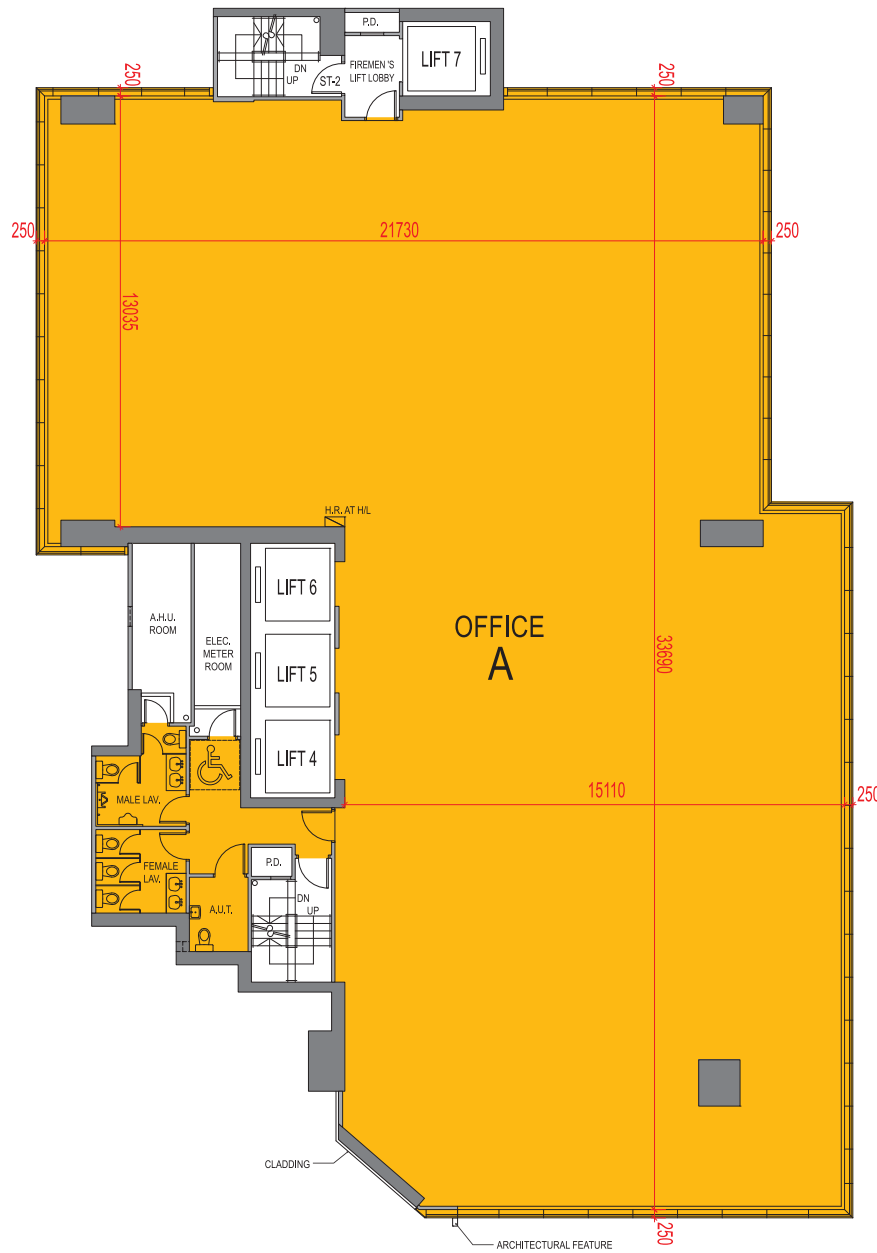
賣方保留權利不時改動發展項目的建築圖則及其他圖則。發展項目的設計以政府相關部門最後批准的圖則為準。The vendor reserves the right to make alterations to the building plans and other plans relating to the Development from time to time, and the design of the Development shall be subject to the final plans approved by the relevant Government authorities.

因較高樓層的結構牆的厚度遞減，較高樓層的單位的內部面積，一般比較低樓層的單位的內部面積稍大。The internal areas of units on upper floors will generally be slightly larger than lower floors due to the reducing thickness of structural walls on upper levels.

樓面平面圖之尺規所列數字為以毫米標示之建築結構尺寸。The dimensions in the floor plans are all structural dimensions in millimetre.



33RD & 35TH FLOOR



AREA SCHEDULE

AREA (sq.ft.)	OFFICE	A
Gross Floor Area		9,566
Saleable Area		7,107

備註 Notes

不設4樓、13樓、14樓、24樓及34樓 Omitted 4/F, 13/F, 14/F, 24/F and 34/F

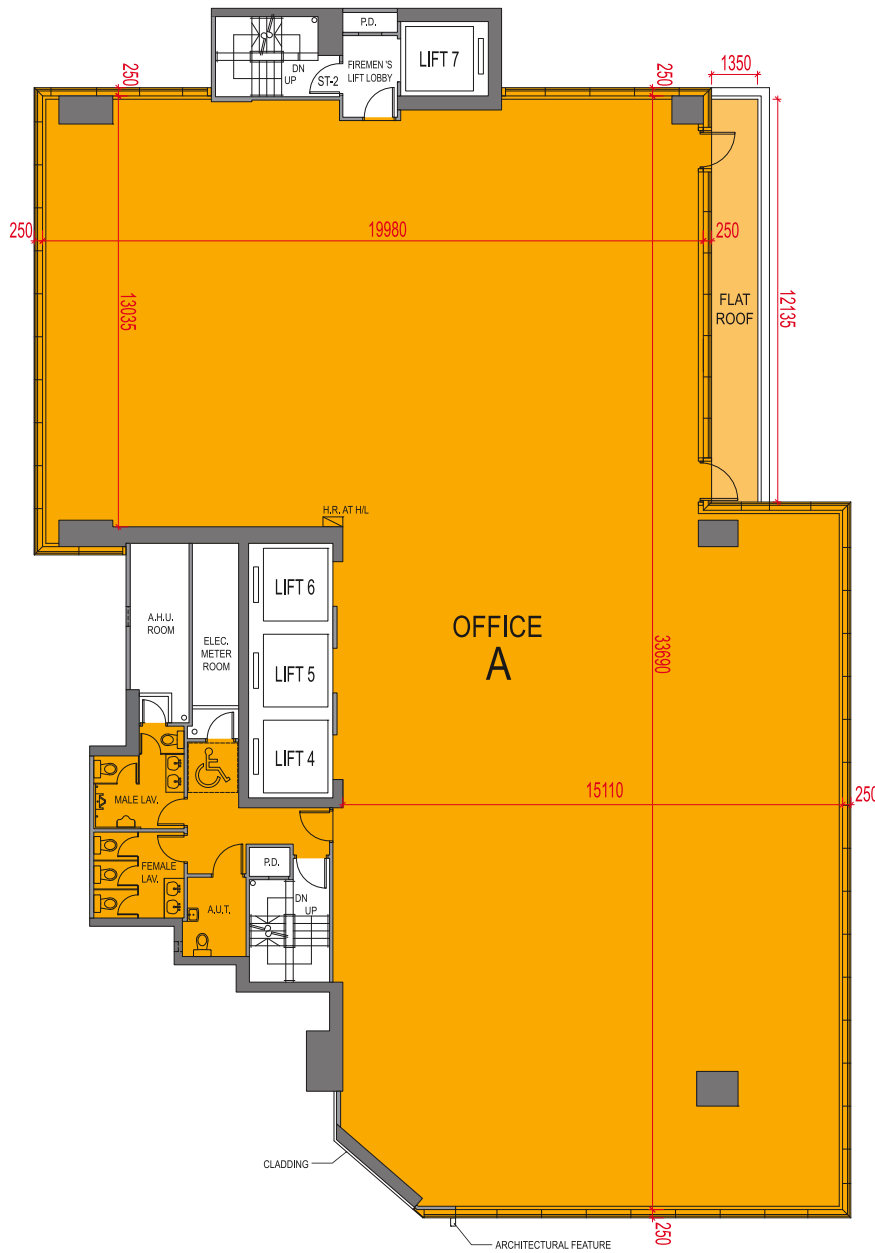
賣方保留權利不時改動發展項目的建築圖則及其他圖則。發展項目的設計以政府相關部門最後批准的圖則為準。The vendor reserves the right to make alterations to the building plans and other plans relating to the Development from time to time, and the design of the Development shall be subject to the final plans approved by the relevant Government authorities.

因較高樓層的結構牆的厚度遞減，較高樓層的單位的內部面積，一般比較低樓層的單位的內部面積稍大。The internal areas of units on upper floors will generally be slightly larger than lower floors due to the reducing thickness of structural walls on upper levels.

樓面平面圖之尺規所列數字為以毫米標示之建築結構尺寸。The dimensions in the floor plans are all structural dimensions in millimetre.



36TH FLOOR



AREA SCHEDULE

AREA [sq.ft.]	OFFICE	A
Gross Floor Area		9,246
Saleable Area		6,869
Flat Roof		176

備註 Notes

不設4樓、13樓、14樓、24樓及34樓 Omitted 4/F, 13/F, 14/F, 24/F and 34/F

賣方保留權利不時改動發展項目的建築圖則及其他圖則。發展項目的設計以政府相關部門最後批准的圖則為準。The vendor reserves the right to make alterations to the building plans and other plans relating to the Development from time to time, and the design of the Development shall be subject to the final plans approved by the relevant Government authorities.

因較高樓層的結構牆的厚度遞減，較高樓層的單位的內部面積，一般比較低樓層的單位的內部面積稍大。The internal areas of units on upper floors will generally be slightly larger than lower floors due to the reducing thickness of structural walls on upper levels.

樓面平面圖之尺規所列數字為以毫米標示之建築結構尺寸。The dimensions in the floor plans are all structural dimensions in millimetre.

37TH FLOOR



SCALE 0m 9m



AREA SCHEDULE ON 37/F

AREA [sq.ft.]	OFFICE A
Gross Floor Area	9,246
Saleable Area	6,869

AREA SCHEDULE ON ROOF

AREA [sq.ft.]	OFFICE A (FLAT ROOF)
Flat Roof	1,025

備註 Notes

不設4樓、13樓、14樓、24樓及34樓 Omitted 4/F, 13/F, 14/F, 24/F and 34/F

賣方保留權利不時改動發展項目的建築圖則及其他圖則。發展項目的設計以政府相關部門最後批准的圖則為準。The vendor reserves the right to make alterations to the building plans and other plans relating to the Development from time to time, and the design of the Development shall be subject to the final plans approved by the relevant Government authorities.

因較高樓層的結構牆的厚度遞減，較高樓層的單位的內部面積，一般比較低樓層的單位的內部面積稍大。The internal areas of units on upper floors will generally be slightly larger than lower floors due to the reducing thickness of structural walls on upper levels.

樓面平面圖之尺規所列數字為以毫米標示之建築結構尺寸。The dimensions in the floor plans are all structural dimensions in millimetre.

ROOF FLOOR



SCALE 0m 9m



備註 Notes

不設4樓、13樓、14樓、24樓及34樓 Omitted 4/F, 13/F, 14/F, 24/F and 34/F

賣方保留權利不時改動發展項目的建築圖則及其他圖則，發展項目的設計以政府相關部門最後批准的圖則為準。The vendor reserves the right to make alterations to the building plans and other plans relating to the Development from time to time, and the design of the Development shall be subject to the final plans approved by the relevant Government authorities.

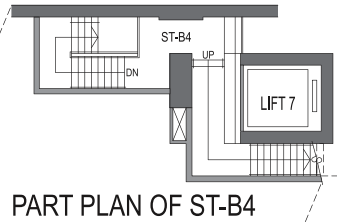
因較高樓層的結構牆的厚度遞減，較高樓層的單位的內部面積，一般比較低樓層的單位的內部面積稍大。The internal areas of units on upper floors will generally be slightly larger than lower floors due to the reducing thickness of structural walls on upper levels.

樓面平面圖之尺規所列數字為以毫米標示之建築結構尺寸。The dimensions in the floor plans are all structural dimensions in millimetre.

BASEMENT LEVEL 1



SCALE 0m 9m



- PRIVATE CAR PARKING SPACES
- PRIVATE MOTOR CYCLE PARKING SPACES

備註 Notes

不設4樓、13樓、14樓、24樓及34樓 Omitted 4/F, 13/F, 14/F, 24/F and 34/F

賣方保留權利不時改動發展項目的建築圖則及其他圖則。發展項目的設計以政府相關部門最後批准的圖則為準。The vendor reserves the right to make alterations to the building plans and other plans relating to the Development from time to time, and the design of the Development shall be subject to the final plans approved by the relevant Government authorities.

因較高樓層的結構牆的厚度遞減，較高樓層的單位的內部面積，一般比較低樓層的單位的內部面積稍大。The internal areas of units on upper floors will generally be slightly larger than lower floors due to the reducing thickness of structural walls on upper levels.

樓面平面圖之尺規所列數字為以毫米標示之建築結構尺寸。The dimensions in the floor plans are all structural dimensions in millimetre.

BASEMENT LEVEL 2



SCALE 0m 9m



- PRIVATE CAR PARKING SPACES
- PRIVATE MOTOR CYCLE PARKING SPACES

備註 Notes

不設4樓、13樓、14樓、24樓及34樓 Omitted 4/F, 13/F, 14/F, 24/F and 34/F

賣方保留權利不時改動發展項目的建築圖則及其他圖則，發展項目的設計以政府相關部門最後批准的圖則為準。The vendor reserves the right to make alterations to the building plans and other plans relating to the Development from time to time, and the design of the Development shall be subject to the final plans approved by the relevant Government authorities.

因較高樓層的結構牆的厚度遞減，較高樓層的單位的內部面積，一般比較低樓層的單位的內部面積稍大。The internal areas of units on upper floors will generally be slightly larger than lower floors due to the reducing thickness of structural walls on upper levels.

樓面平面圖之尺規所列數字為以毫米標示之建築結構尺寸。The dimensions in the floor plans are all structural dimensions in millimetre.

BASEMENT LEVEL 3



SCALE 0m 9m



- PRIVATE CAR PARKING SPACES
- PRIVATE MOTOR CYCLE PARKING SPACES

備註 Notes

不設4樓、13樓、14樓、24樓及34樓 Omitted 4/F, 13/F, 14/F, 24/F and 34/F
 賣方保留權利不時改動發展項目的建築圖則及其他圖則。發展項目的設計以政府相關部門最後批准的圖則為準。The vendor reserves the right to make alterations to the building plans and other plans relating to the Development from time to time, and the design of the Development shall be subject to the final plans approved by the relevant Government authorities.
 因較高樓層的結構牆的厚度遞減，較高樓層的單位的內部面積，一般比較低樓層的單位的內部面積稍大。The internal areas of units on upper floors will generally be slightly larger than lower floors due to the reducing thickness of structural walls on upper levels.
 樓面平面圖之尺規所列數字為以毫米標示之建築結構尺寸。The dimensions in the floor plans are all structural dimensions in millimetre.