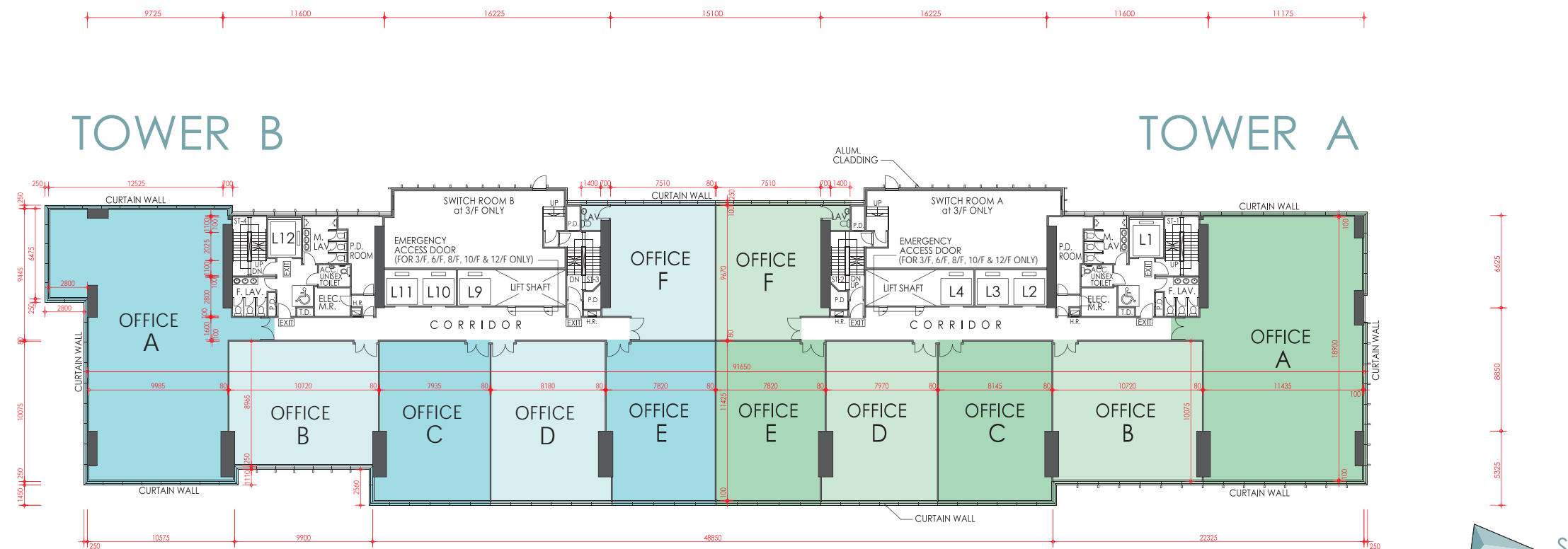


# 6th - 12th FLOOR PLAN



6th - 12th Floor Area Schedule (Tower B)

AREA (sq.ft)	Gross Floor Area	Saleable Area	Unit Covered Area	Apportioned Share Of Common Area
OFFICE A	3,616	2,551	2,551	1,065
OFFICE B	1,589	1,081	1,081	508
OFFICE C	1,535	1,044	1,044	491
OFFICE D	1,579	1,074	1,074	505
OFFICE E	1,453	988	988	465
OFFICE F	1,311	892	892	419

6th - 12th Floor Area Schedule (Tower A)

AREA (sq.ft)	Gross Floor Area	Saleable Area	Unit Covered Area	Apportioned Share Of Common Area
OFFICE A	3,652	2,557	2,557	1,095
OFFICE B	1,779	1,210	1,210	569
OFFICE C	1,553	1,056	1,056	497
OFFICE D	1,533	1,043	1,043	490
OFFICE E	1,458	992	992	466
OFFICE F	1,311	892	892	419

Excluding 4/F, 13/F, 14/F and 24/F 不設 4、13、14 及 24 樓  
 The internal areas of units on upper floors are in general slightly larger than lower floors due to possible reduced thickness of structural walls on those floors.  
 層數較高單位由於結構牆較低層單位稍薄，因而室內空間或會稍為增多。  
 All given information on this brochure is for reference only and the plan is subject to final Government approved plans and documentation.  
 本售樓書所提供的資料僅供參考，一切內容均以政府最後批准圖則及法律文件為準。

