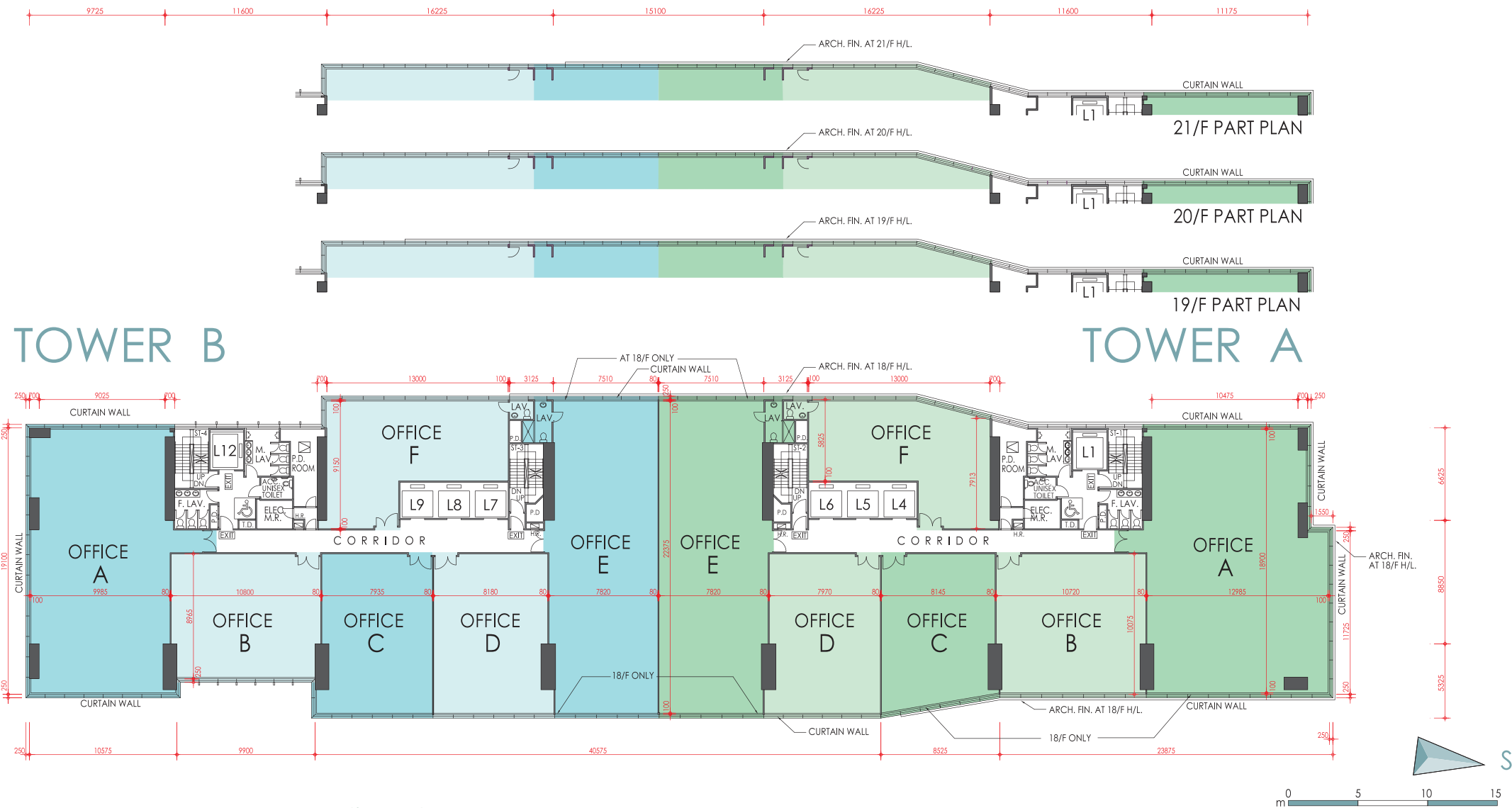


# 18<sup>th</sup> -21<sup>st</sup> FLOOR PLAN

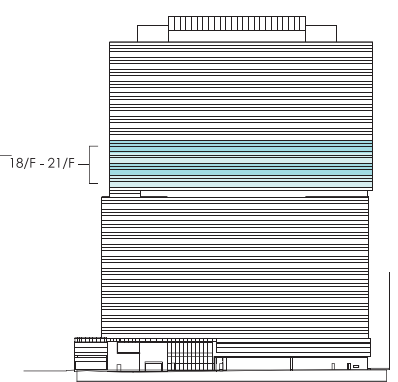
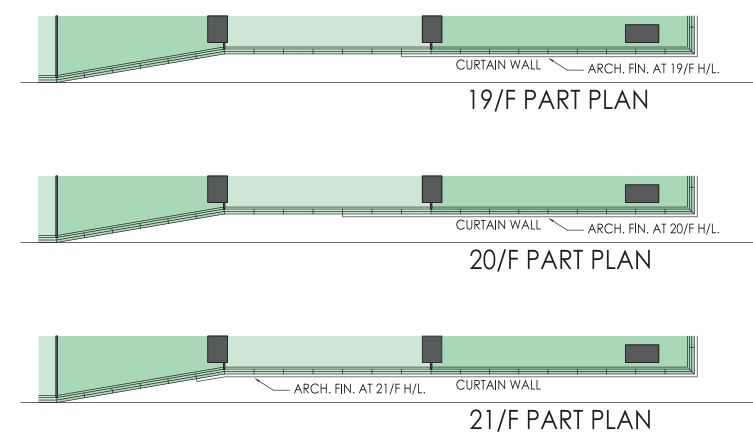


18<sup>th</sup> -21<sup>st</sup> Floor Area Schedule (Tower B)

AREA (sq.ft)	Gross Floor Area	Saleable Area	Unit Covered Area	Apportioned Share Of Common Area
OFFICE A	3,222	2,283	2,283	939
OFFICE B	1,589	1,081	1,081	508
OFFICE C	1,535	1,044	1,044	491
OFFICE D	1,578	1,073	1,073	505
OFFICE E	2,930	2,029	2,029	901
OFFICE F	1,703	1,158	1,158	545

18<sup>th</sup> -21<sup>st</sup> Floor Area Schedule (Tower A)

AREA (sq.ft)	Gross Floor Area	Saleable Area	Unit Covered Area	Apportioned Share Of Common Area
OFFICE A	3,960	2,766	2,766	1,194
OFFICE B	1,770	1,204	1,204	566
OFFICE C	1,464	996	996	468
OFFICE D	1,533	1,043	1,043	490
OFFICE E	2,936	2,033	2,033	903
OFFICE F	1,635	1,112	1,112	523



Excluding 4/F, 13/F, 14/F and 24/F 不設 4、13、14 及 24 樓  
 The internal areas of units on upper floors are in general slightly larger than lower floors due to possible reduced thickness of structural walls on those floors.  
 層數較高單位由於結構牆較低層單位稍薄，因而室內空間或會稍為增多。  
 All given information on this brochure is for reference only and the plan is subject to final Government approved plans and documentation.  
 本售樓書所提供的資料僅供參考，一切內容均以政府最後批准圖則及法律文件為準。